

DATA SHEET

SPD1101-111, SPD1102-111, SPD1103-111: Sampling Phase Detectors

Features

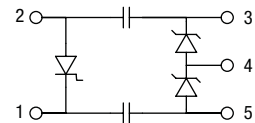
- For phase locked VCOs to 22 GHz
- Reference frequencies below 50 MHz
- New surface mount package design
- Small footprint (90 x 110 mils)
- Automated chip on board construction
- Available on tape and reel
- Available lead (Pb)-free, RoHS-compliant, and Green

Description

Skyworks family of sampling phase detectors, SPD1101-111, SPD1102-111 and SPD1103-111, consists of a step recovery diode (SRD), a series pair of Schottky mixer diodes and a pair of coupling capacitors. These chip on board components are manufactured using automated pick-and-place techniques to provide uniformly performing, surface mountable, small footprint devices with excellent high-frequency performance.

Sampling phase detectors are typically used in systems which lock the output signal of a high-frequency voltage controlled oscillator (VCO) to a lower frequency, stable reference oscillator output signal. The reference oscillator signal is applied to the SRD, which produces outputs at the harmonics of the reference oscillator frequency. This comb of harmonics is coupled to the Schottky series pair, which comprises a singly balanced mixer, via the on-board coupling capacitors. The high-frequency signal from the VCO is applied to the center node of the Schottky diode pair. The high-frequency VCO signal is mixed with the harmonics of the low-frequency, stable reference oscillator signal in the Schottky diode pair. The desired output signal, which is typically the different frequency signal that is produced by the VCO signal and the harmonic of the reference oscillator signal nearest to it in frequency, is present at pin 4 of the sampling phase detector, along with the other mixer products produced by the other harmonics of the reference oscillator signal and the VCO signal, all of which are higher in frequency than the desired output signal. The desired output signal is selected by an external low pass filter, and can be utilized to lock the frequency and the phase of the VCO signal to the stable reference oscillator signal.

Schematic Diagram



Absolute Maximum Ratings

Characteristic	Value
Incident power	27 dBm
Operating temperature	-65 °C to +150 °C
Storage temperature	-65 °C to +175 °C
ESD human body model	Class 1B

Performance is guaranteed only under the conditions listed in the specifications table and is not guaranteed under the full range(s) described by the Absolute Maximum specifications. Exceeding any of the absolute maximum/minimum specifications may result in permanent damage to the device and will void the warranty.

CAUTION: Although this device is designed to be as robust as possible, ESD (Electrostatic Discharge) can damage this device. This device must be protected at all times from ESD. Static charges may easily produce potentials of several kilovolts on the human body or equipment, which can discharge without detection. Industry-standard ESD precautions must be employed at all times.

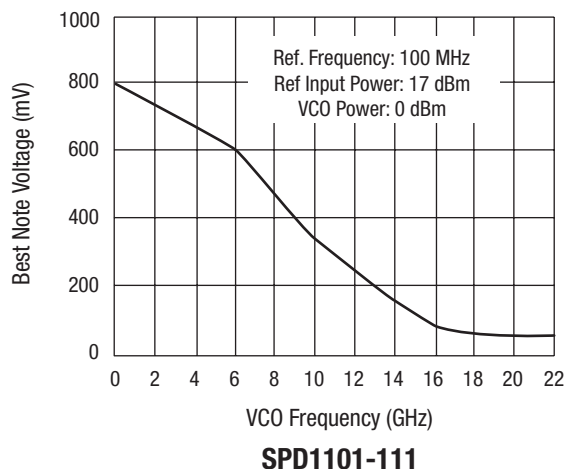
NEW Skyworks Green products are lead (Pb)-free, RoHS (Restriction of Hazardous Substances)-compliant, conform to the EIA/EICTA/JEITA Joint Industry Guide (JIG) Level A guidelines, and are free from antimony trioxide and brominated flame retardants.



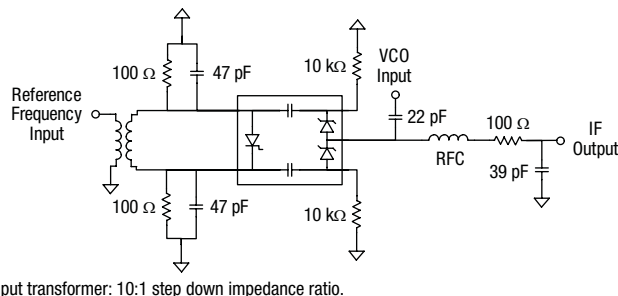
Electrical Characteristics at 25 °C

Part Number	Microwave Signal Drive Level (dBm)	Schottky Diode				Capacitor	Step Recovery Diode		
		Barrier	V _F @ 1 mA (mV)	C _J @ 0 V (pF)	R _T @ 5 mA (Ω)	C _C (pF)	C _J @ 6 V (pF)	T _L (ns)	TT (ps)
	Typ.		Max.	Max.	Typ.	Max.	Typ.	Typ.	
SPD1101-111	-3 to 0	Low	270–350	0.1	24	0.5	0.25	10	70
SPD1102-111	0 to 3	Medium	370–550	0.1	24	0.5	0.25	10	70
SPD1103-111	0 to 13	High	600–700	0.1	24	0.5	0.25	10	70

Typical Performance



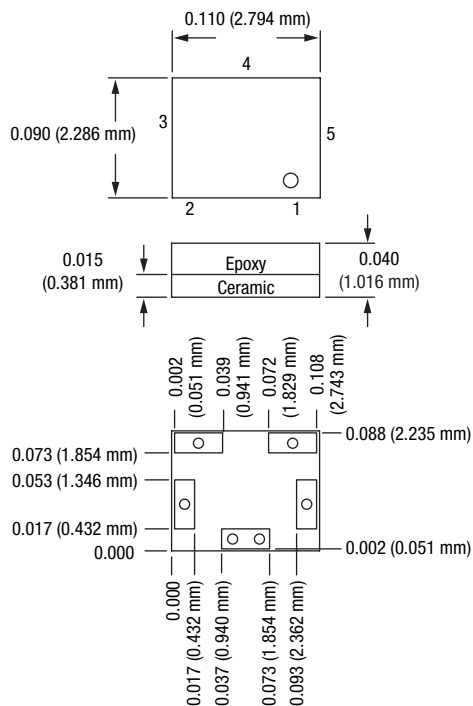
Suggested Circuit



Recommended Solder Reflow Profiles

Refer to the [“Recommended Solder Reflow Profile”](#) Application Note.

-111 Package Outline



Tape and Reel Information

Refer to the [“Discrete Devices and IC Switch/Attenuators Tape and Reel Package Orientation”](#) Application Note.

Copyright © 2002, 2003, 2004, 2005, 2006, Skyworks Solutions, Inc. All Rights Reserved.

Information in this document is provided in connection with Skyworks Solutions, Inc. ("Skyworks") products or services. These materials, including the information contained herein, are provided by Skyworks as a service to its customers and may be used for informational purposes only by the customer. Skyworks assumes no responsibility for errors or omissions in these materials or the information contained herein. Skyworks may change its documentation, products, services, specifications or product descriptions at any time, without notice. Skyworks makes no commitment to update the materials or information and shall have no responsibility whatsoever for conflicts, incompatibilities, or other difficulties arising from any future changes.

No license, whether express, implied, by estoppel or otherwise, is granted to any intellectual property rights by this document. Skyworks assumes no liability for any materials, products or information provided hereunder, including the sale, distribution, reproduction or use of Skyworks products, information or materials, except as may be provided in Skyworks Terms and Conditions of Sale.

THE MATERIALS, PRODUCTS AND INFORMATION ARE PROVIDED "AS IS" WITHOUT WARRANTY OF ANY KIND, WHETHER EXPRESS, IMPLIED, STATUTORY, OR OTHERWISE, INCLUDING FITNESS FOR A PARTICULAR PURPOSE OR USE, MERCHANTABILITY, PERFORMANCE, QUALITY OR NON-INFRINGEMENT OF ANY INTELLECTUAL PROPERTY RIGHT; ALL SUCH WARRANTIES ARE HEREBY EXPRESSLY DISCLAIMED. SKYWORKS DOES NOT WARRANT THE ACCURACY OR COMPLETENESS OF THE INFORMATION, TEXT, GRAPHICS OR OTHER ITEMS CONTAINED WITHIN THESE MATERIALS. SKYWORKS SHALL NOT BE LIABLE FOR ANY DAMAGES, INCLUDING BUT NOT LIMITED TO ANY SPECIAL, INDIRECT, INCIDENTAL, STATUTORY, OR CONSEQUENTIAL DAMAGES, INCLUDING WITHOUT LIMITATION, LOST REVENUES OR LOST PROFITS THAT MAY RESULT FROM THE USE OF THE MATERIALS OR INFORMATION, WHETHER OR NOT THE RECIPIENT OF MATERIALS HAS BEEN ADVISED OF THE POSSIBILITY OF SUCH DAMAGE.

Skyworks products are not intended for use in medical, lifesaving or life-sustaining applications, or other equipment in which the failure of the Skyworks products could lead to personal injury, death, physical or environmental damage. Skyworks customers using or selling Skyworks products for use in such applications do so at their own risk and agree to fully indemnify Skyworks for any damages resulting from such improper use or sale.

Customers are responsible for their products and applications using Skyworks products, which may deviate from published specifications as a result of design defects, errors, or operation of products outside of published parameters or design specifications. Customers should include design and operating safeguards to minimize these and other risks. Skyworks assumes no liability for applications assistance, customer product design, or damage to any equipment resulting from the use of Skyworks products outside of stated published specifications or parameters.

Skyworks, the Skyworks symbol, and "Breakthrough Simplicity" are trademarks or registered trademarks of Skyworks Solutions, Inc., in the United States and other countries. Third-party brands and names are for identification purposes only, and are the property of their respective owners. Additional information, including relevant terms and conditions, posted at www.skyworksinc.com, are incorporated by reference.