

Product Features

- DC-4 GHz
- Single voltage supply
- Internally matched to 50 ohms
- Low Performance variation over temperature
- Transient Protected
- Aqueous washable
- Protected By US Patent 6,943,629



Generic photo used for illustration purposes only

ERA-4+

CASE STYLE: VV105

+RoHS Compliant

The +Suffix identifies RoHS Compliance. See our web site for RoHS Compliance methodologies and qualifications

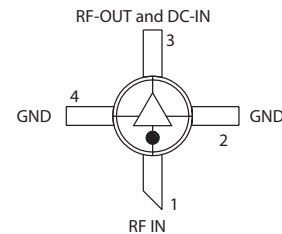
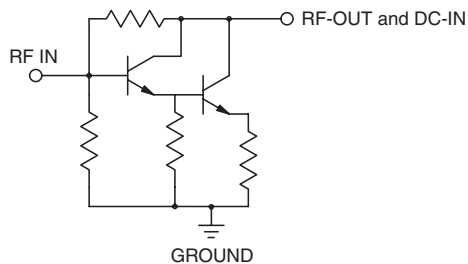
Typical Applications

- Cellular/ PCS/ 3G Base Station
- CATV, Cable Modem & DBS
- Fixed Wireless & WLAN
- Microwave Radio & Test Equipment

General Description

ERA-4+ (RoHS compliant) is a wideband amplifier offering high dynamic range. It has repeatable performance from lot to lot. It is enclosed in a Micro-X package. ERA-4+ uses Darlington configuration and is fabricated using InGaP HBT technology. Expected MTTF is 170 years at 85°C case temperature.

simplified schematic and pin description



Function	Pin Number	Description
RF IN	1	RF input pin. This pin requires the use of an external DC blocking capacitor chosen for the frequency of operation.
RF-OUT and DC-IN	3	RF output and bias pin. DC voltage is present on this pin; therefore a DC blocking capacitor is necessary for proper operation. An RF choke is needed to feed DC bias without loss of RF signal due to the bias connection, as shown in "Recommended Application Circuit".
GND	2,4	Connections to ground. Use via holes as shown in "Suggested Layout for PCB Design" to reduce ground path inductance for best performance.

Notes

- A. Performance and quality attributes and conditions not expressly stated in this specification document are intended to be excluded and do not form a part of this specification document.
 B. Electrical specifications and performance data contained in this specification document are based on Mini-Circuit's applicable established test performance criteria and measurement instructions.
 C. The parts covered by this specification document are subject to Mini-Circuits standard limited warranty and terms and conditions (collectively, "Standard Terms"); Purchasers of this part are entitled to the rights and benefits contained therein. For a full statement of the Standard Terms and the exclusive rights and remedies thereunder, please visit Mini-Circuits' website at www.minicircuits.com/MCLStore/terms.jsp



Electrical Specifications⁽¹⁾ at 25°C and 65mA, unless noted

Parameter	Condition (GHz)	Min.	Typ.	Max.	Units
Frequency Range*		DC		4	GHz
Gain	0.1	13.7	14.4	15	dB
	1.0	—	14.2	—	
	2.0	12.5	13	13.6	
	3.0	—	12	—	
	4.0	10.8	11.3	12.1	
Magnitude of Gain Variation versus Temperature (values are negative)	0.1	—	.003	.006	dB/°C
	1.0	—	.0025	.006	
	2.0	—	.0031	.006	
	3.0	—	.0042	.008	
	4.0	—	.0051	.01	
Input Return Loss	0.1		35		dB
	2.0		30		
	3.0		21		
	4.0		21		
Output Return Loss	0.1		35		dB
	2.0		21		
	3.0		21		
	4.0		16		
Reverse Isolation	2.0	18	23	—	dB
Output Power @ 1 dB compression	0.1	—	17.5	—	dBm
	1.0	15	17.3	—	
	2.0	—	16.1	—	
	3.0	—	14	—	
	4.0	—	11.7	—	
Saturated Output Power (at 3dB compression)	0.1		17.8		dBm
	2.0		16.5		
Output IP3	0.1	32	36.1	—	dBm
	1.0	31	35	—	
	2.0	27	30.4	—	
	4.0	—	25	—	
Noise Figure	0.1	—	4	5	dB
	1.0	—	4.2	5.2	
	2.0	—	4.2	5.2	
	4.0	—	4.5	5.5	
Group Delay	2.0		80		psec
Recommended Device Operating Current			65		mA
Device Operating Voltage		4.3	4.6	4.9	V
Device Voltage Variation vs. Temperature at 65mA			-2.9		mV/°C
Device Voltage Variation vs. Current at 25°C			10.4		mV/mA
Thermal Resistance, junction-to-case ⁽²⁾			191		°C/W

*Guaranteed specification DC-4 GHz. Low frequency cut off determined by external coupling capacitors.

Absolute Maximum Ratings

Parameter	Ratings
Operating Temperature ⁽³⁾	-45°C to 85°C
Storage Temperature	-65°C to 150°C
Operating Current	85mA
Power Dissipation	417mW
Input Power	20 dBm

Note: Permanent damage may occur if any of these limits are exceeded. These ratings are not intended for continuous normal operation.

⁽¹⁾Measured on Mini-Circuits test board TB-320

⁽²⁾Case is defined as ground leads.

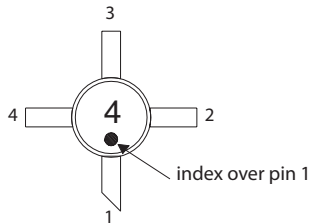
⁽³⁾Based on typical case temperature rise 5°C above ambient.

Notes

A. Performance and quality attributes and conditions not expressly stated in this specification document are intended to be excluded and do not form a part of this specification document.
 B. Electrical specifications and performance data contained in this specification document are based on Mini-Circuit's applicable established test performance criteria and measurement instructions.
 C. The parts covered by this specification document are subject to Mini-Circuits standard limited warranty and terms and conditions (collectively, "Standard Terms"); Purchasers of this part are entitled to the rights and benefits contained therein. For a full statement of the Standard Terms and the exclusive rights and remedies thereunder, please visit Mini-Circuits' website at www.minicircuits.com/MCLStore/terms.jsp



Product Marking



Markings in addition to model number designation may appear for internal quality control purposes.

Additional Detailed Technical Information

Additional information is available on our web site. To access this information enter the model number on our web site home page.

Performance data, graphs, s-parameter data set (.zip file)

Case Style: VV105

Plastic micro-x, .085 body diameter, lead finish: matte-tin

Tape & Reel: F4

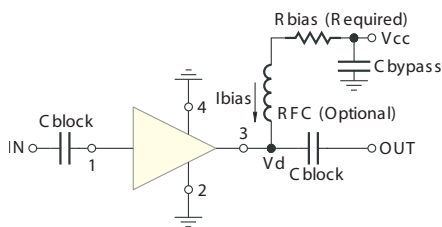
7" Reels with 20, 50, 100, 200, 500, 1K devices

Suggested Layout for PCB Design: PL-261

Evaluation Board: TB-431-4+

Environmental Ratings: ENV08T2

Recommended Application Circuit



R BIAS	
Vcc	"1%" Res. Values (ohms) for Optimum Biasing
7	38.3
8	52.3
9	66.5
10	80.6
11	95.3
12	115
13	127
14	143
15	158
16	174
17	187
18	205
19	221
20	237

Notes

- A. Performance and quality attributes and conditions not expressly stated in this specification document are intended to be excluded and do not form a part of this specification document.
- B. Electrical specifications and performance data contained in this specification document are based on Mini-Circuit's applicable established test performance criteria and measurement instructions.
- C. The parts covered by this specification document are subject to Mini-Circuits standard limited warranty and terms and conditions (collectively, "Standard Terms"); Purchasers of this part are entitled to the rights and benefits contained therein. For a full statement of the Standard Terms and the exclusive rights and remedies thereunder, please visit Mini-Circuits' website at www.minicircuits.com/MCLStore/terms.jsp



ESD Rating

Human Body Model (HBM): Class 1A (250 v to < 500 v) in accordance with ANSI/ESD STM 5.1 - 2001

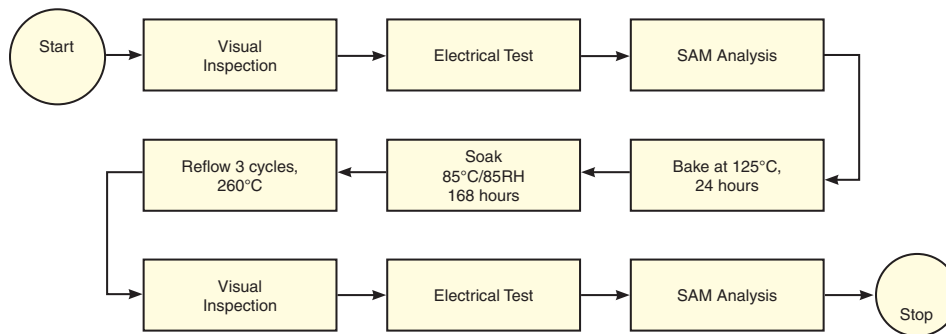
Machine Model (MM): Class M1 (< 100 v) in accordance with ANSI/ESD STM 5.2 - 1999

MSL Rating

Moisture Sensitivity: MSL1 in accordance with IPC/JEDECJ-STD-020

No.	Test Required	Condition	Standard	Quantity
1	Visual Inspection	Low Power Microscope Magnification 40x	MIP-IN-0003 (MCT spec)	45 units
2	Electrical Test	Room Temperature	SCD (MCL spec)	45 units
3	SAM Analysis	Less than 10% growth in term of delamination	J-Std-020C (Jedec Standard)	45 units
4	Moisture Sensitivity Level 1	Bake at 125°C for 24 hours Soak at 85°C/85%RH for 168 hours Reflow 3 cycles at 260°C peak	J-Std-020C (Jedec Standard)	45 units

MSL Test Flow Chart



Notes

- A. Performance and quality attributes and conditions not expressly stated in this specification document are intended to be excluded and do not form a part of this specification document.
- B. Electrical specifications and performance data contained in this specification document are based on Mini-Circuit's applicable established test performance criteria and measurement instructions.
- C. The parts covered by this specification document are subject to Mini-Circuits standard limited warranty and terms and conditions (collectively, "Standard Terms"); Purchasers of this part are entitled to the rights and benefits contained therein. For a full statement of the Standard Terms and the exclusive rights and remedies thereunder, please visit Mini-Circuits' website at www.minicircuits.com/MCLStore/terms.jsp



Typical Performance Data

NOTE: Use PDF Bookmarks to view DATA at required conditions

Definitions:

Input Return Loss = -S11 (dB)

Gain(Power Gain) = S21 (dB)

Reverse Isolation = -S12 (dB)

Output Return Loss = -S22 (dB)

TEST CONDITIONS: Id=65mA, Vd = 4.43V @ Temperature = +25degC

FREQ	Gain	Isolation	Input Return Loss	Output Return Loss	Stability		IP-3 Output	1dB Comp. Output	Noise Figure
					K	Delta			
(MHz)	(dB)	(dB)	(dB)	(dB)	K	Delta	(dBm)	(dBm)	(dB)
10.00	14.40	19.25	37.18	41.43	1.16	0.67	36.22	17.20	4.14
50.00	14.43	19.03	36.69	46.36	1.14	0.65	36.22	17.86	4.14
100.00	14.39	19.05	36.16	46.38	1.15	0.66	36.24	17.79	4.12
200.00	14.36	19.04	35.72	41.57	1.15	0.66	35.94	17.65	4.11
300.00	14.31	19.00	37.35	39.24	1.15	0.66	35.97	17.59	4.23
400.00	14.27	19.06	38.28	36.48	1.16	0.67	35.30	17.74	4.29
500.00	14.22	19.06	38.35	34.16	1.16	0.67	35.09	17.79	4.25
600.00	14.18	19.01	37.72	32.02	1.16	0.67	34.70	17.56	4.27
700.00	14.13	19.05	35.95	30.18	1.16	0.68	34.34	17.54	4.22
800.00	14.08	19.06	34.38	28.51	1.17	0.68	34.26	17.51	4.18
900.00	14.03	19.07	32.37	27.13	1.17	0.69	34.04	17.69	4.24
1000.00	13.97	19.09	30.85	26.09	1.18	0.69	33.56	17.25	4.27
1100.00	13.91	19.09	29.60	25.04	1.18	0.69	33.53	17.40	4.22
1200.00	13.86	19.12	28.62	24.23	1.18	0.70	33.45	17.38	4.23
1300.00	13.80	19.15	27.56	23.50	1.19	0.70	33.22	17.33	4.26
1400.00	13.73	19.16	26.74	22.75	1.20	0.71	32.86	16.95	4.23
1500.00	13.67	19.22	25.94	22.27	1.20	0.72	32.43	16.82	4.23
1600.00	13.61	19.22	25.45	21.78	1.21	0.72	32.35	16.75	4.32
1700.00	13.54	19.25	24.80	21.30	1.22	0.72	32.12	16.72	4.23
1800.00	13.47	19.29	24.51	21.02	1.22	0.73	31.59	16.39	4.33
1900.00	13.40	19.32	23.98	20.69	1.23	0.74	31.58	16.27	4.33
2000.00	13.33	19.35	23.62	20.42	1.24	0.74	31.38	16.20	4.27
2250.00	13.15	19.44	22.98	20.00	1.26	0.75	30.01	15.35	4.29
2500.00	12.97	19.56	22.38	19.72	1.29	0.77	29.17	15.11	4.35
2750.00	12.77	19.66	21.92	19.64	1.32	0.78	28.63	14.72	4.32
3000.00	12.57	19.82	21.33	19.87	1.39	0.82	27.68	14.00	4.33
3250.00	12.38	19.96	20.80	19.79	1.44	0.83	26.63	13.28	4.40
3500.00	12.15	20.13	20.46	20.27	1.48	0.84	26.14	12.83	4.48
3750.00	11.97	20.27	19.68	20.47	1.53	0.86	25.76	12.24	4.58
4000.00	11.77	20.45	18.80	20.39	1.58	0.87	24.81	11.81	4.56
4250.00	11.56	20.64	18.37	20.47	1.66	0.89	24.09	11.26	4.57
4500.00	11.31	20.99	16.59	20.05	1.68	0.90	23.79	11.04	4.64
4750.00	11.11	21.00	15.62	19.81	1.75	0.92	23.31	10.59	4.72
5000.00	10.87	21.23	15.35	19.93	1.89	0.93	22.18	9.96	4.81
5250.00	10.59	21.78	13.99	19.99	1.90	0.95	21.92	9.38	4.95
5500.00	10.48	21.79	13.92	20.75	2.10	0.97	22.14	9.31	5.12
5750.00	10.25	22.60	12.61	19.96	2.10	0.99	21.14	8.79	5.15
6000.00	10.09	22.61	11.98	19.28	2.15	1.00	20.49	8.31	5.41
6250.00	9.85	22.74	11.36	18.56	2.20	1.01	20.64	8.24	5.45
6500.00	9.58	22.82	10.85	18.33	2.33	1.03	20.49	8.32	5.57
6750.00	9.52	23.42	10.41	17.21	2.32	1.04	19.52	8.03	5.63
7000.00	9.29	23.32	10.08	16.52	2.40	1.05	19.14	7.36	5.90

MMIC Amplifier

ERA-4+

Typical Performance Data

Definitions:

Input Return Loss = -S11 (dB)

Gain(Power Gain) = S21 (dB)

Reverse Isolation = -S12 (dB)

Output Return Loss = -S22 (dB)

TEST CONDITIONS: Id=52mA, Vd = 4.32V @ Temperature = +25degC

FREQ	Gain	Isolation	Input Return Loss	Output Return Loss	Stability		IP-3 Output	1dB Comp. Output	Noise Figure
					K	Delta			
(MHz)	(dB)	(dB)	(dB)	(dB)	K	Delta	(dBm)	(dBm)	(dB)
10.00	14.28	18.78	38.26	39.52	1.14	0.64	32.76	15.94	4.04
50.00	14.31	18.96	32.85	36.65	1.15	0.66	32.60	16.33	4.04
100.00	14.28	18.95	32.60	37.13	1.15	0.66	32.61	16.16	4.06
200.00	14.24	18.94	32.08	35.80	1.15	0.66	32.35	16.06	4.08
300.00	14.20	18.94	33.42	36.41	1.15	0.66	32.55	16.00	4.13
400.00	14.16	18.95	34.64	35.86	1.16	0.67	32.24	16.14	4.20
500.00	14.11	18.95	35.55	34.80	1.16	0.67	32.32	16.28	4.20
600.00	14.07	18.95	36.85	33.12	1.16	0.68	32.30	16.10	4.17
700.00	14.02	18.96	37.14	31.45	1.17	0.68	32.15	16.01	4.14
800.00	13.97	18.97	36.82	29.75	1.17	0.68	32.04	16.10	4.12
900.00	13.92	18.98	35.01	28.26	1.17	0.69	31.92	16.18	4.15
1000.00	13.87	19.00	33.19	27.14	1.18	0.69	31.48	15.65	4.17
1100.00	13.81	19.01	31.94	26.04	1.18	0.70	31.62	15.94	4.11
1200.00	13.75	19.03	30.70	25.16	1.19	0.70	31.77	15.97	4.12
1300.00	13.70	19.05	29.46	24.39	1.19	0.71	31.51	15.95	4.20
1400.00	13.63	19.07	28.47	23.59	1.20	0.71	31.22	15.75	4.13
1500.00	13.57	19.13	27.50	23.03	1.21	0.72	31.22	15.93	4.13
1600.00	13.51	19.14	26.96	22.53	1.21	0.72	30.97	15.86	4.17
1700.00	13.44	19.16	26.14	21.99	1.22	0.73	30.82	15.85	4.14
1800.00	13.37	19.19	25.83	21.68	1.23	0.73	30.45	15.66	4.24
1900.00	13.30	19.25	25.19	21.34	1.24	0.74	30.40	15.48	4.19
2000.00	13.23	19.24	24.68	21.00	1.24	0.74	29.96	15.29	4.20
2250.00	13.05	19.36	23.88	20.58	1.27	0.76	28.84	14.66	4.16
2500.00	12.87	19.46	23.10	20.29	1.29	0.77	28.10	14.37	4.22
2750.00	12.67	19.56	22.53	20.19	1.32	0.79	27.53	13.91	4.24
3000.00	12.47	19.74	21.65	20.40	1.40	0.82	26.63	13.20	4.16
3250.00	12.28	19.89	21.03	20.34	1.44	0.83	25.62	12.48	4.29
3500.00	12.05	20.07	20.56	20.82	1.48	0.85	25.12	12.03	4.36
3750.00	11.87	20.20	19.69	21.05	1.53	0.86	24.74	11.46	4.43
4000.00	11.67	20.41	18.80	20.95	1.59	0.88	23.90	11.03	4.38
4250.00	11.45	20.60	18.30	21.03	1.68	0.89	23.16	10.49	4.45
4500.00	11.20	20.98	16.50	20.62	1.70	0.91	22.81	10.23	4.45
4750.00	11.00	20.99	15.49	20.36	1.78	0.92	22.29	9.79	4.57
5000.00	10.74	21.24	15.19	20.49	1.91	0.94	21.23	9.15	4.67
5250.00	10.47	21.76	13.80	20.47	1.92	0.95	20.96	8.58	4.71
5500.00	10.34	21.79	13.66	21.21	2.12	0.97	21.07	8.46	4.94
5750.00	10.11	22.59	12.34	20.24	2.14	0.99	20.11	7.98	4.99
6000.00	9.94	22.68	11.70	19.42	2.18	1.01	19.38	7.49	5.21
6250.00	9.69	22.76	11.08	18.63	2.25	1.02	19.57	7.43	5.24
6500.00	9.41	22.91	10.54	18.23	2.37	1.04	19.42	7.50	5.35
6750.00	9.33	23.50	10.10	17.03	2.38	1.05	18.37	7.24	5.44
7000.00	9.09	23.45	9.74	16.28	2.45	1.06	17.96	6.57	5.72

MMIC Amplifier

ERA-4+

Typical Performance Data

Definitions:

Input Return Loss = -S11 (dB)

Gain(Power Gain) = S21 (dB)

Reverse Isolation = -S12 (dB)

Output Return Loss = -S22 (dB)

TEST CONDITIONS: Id=78mA, Vd = 4.55V @ Temperature = +25degC

FREQ	Gain	Isolation	Input Return Loss	Output Return Loss	Stability		IP-3 Output	1dB Comp. Output	Noise Figure
					K	Delta			
(MHz)	(dB)	(dB)	(dB)	(dB)	K	Delta	(dBm)	(dBm)	(dB)
10.00	14.45	18.78	46.11	40.97	1.13	0.63	38.38	17.72	4.27
50.00	14.50	19.10	41.33	50.48	1.14	0.65	39.09	18.41	4.23
100.00	14.47	19.07	40.04	47.52	1.14	0.65	38.99	18.30	4.24
200.00	14.43	19.10	39.11	42.76	1.15	0.66	38.54	18.20	4.19
300.00	14.39	19.07	40.77	38.38	1.15	0.66	38.64	18.28	4.28
400.00	14.34	19.10	40.41	34.97	1.15	0.67	37.27	18.54	4.40
500.00	14.29	19.09	38.42	32.96	1.16	0.67	36.67	18.63	4.45
600.00	14.25	19.10	36.75	30.88	1.16	0.67	35.27	18.41	4.31
700.00	14.20	19.10	34.25	29.18	1.16	0.68	35.39	18.40	4.34
800.00	14.15	19.11	32.70	27.64	1.17	0.68	35.47	18.30	4.29
900.00	14.10	19.13	30.83	26.35	1.17	0.68	35.01	18.50	4.32
1000.00	14.04	19.15	29.44	25.36	1.17	0.69	34.66	18.19	4.37
1100.00	13.98	19.17	28.34	24.40	1.18	0.69	34.62	18.18	4.31
1200.00	13.93	19.19	27.39	23.63	1.18	0.70	34.35	18.08	4.38
1300.00	13.87	19.19	26.54	22.97	1.19	0.70	33.97	18.00	4.36
1400.00	13.80	19.22	25.75	22.24	1.19	0.71	33.54	17.49	4.29
1500.00	13.74	19.27	25.02	21.78	1.20	0.71	33.04	17.26	4.31
1600.00	13.67	19.28	24.58	21.32	1.21	0.72	32.82	17.20	4.39
1700.00	13.61	19.31	24.00	20.86	1.21	0.72	32.82	17.17	4.32
1800.00	13.53	19.34	23.70	20.61	1.22	0.73	32.44	16.79	4.42
1900.00	13.46	19.39	23.27	20.28	1.23	0.74	32.26	16.69	4.40
2000.00	13.40	19.39	22.89	20.01	1.24	0.74	32.14	16.68	4.39
2250.00	13.22	19.50	22.35	19.60	1.26	0.75	30.61	15.80	4.38
2500.00	13.03	19.60	21.81	19.36	1.29	0.77	29.84	15.63	4.40
2750.00	12.84	19.70	21.45	19.28	1.32	0.78	29.41	15.24	4.45
3000.00	12.63	19.85	21.03	19.51	1.39	0.81	28.34	14.58	4.34
3250.00	12.45	19.99	20.55	19.43	1.44	0.83	27.40	13.93	4.54
3500.00	12.22	20.20	20.32	19.88	1.47	0.84	26.86	13.50	4.63
3750.00	12.05	20.28	19.61	20.08	1.52	0.86	26.43	12.94	4.73
4000.00	11.85	20.49	18.80	19.98	1.57	0.87	25.60	12.52	4.64
4250.00	11.64	20.68	18.38	20.08	1.66	0.89	24.88	11.93	4.73
4500.00	11.40	21.03	16.63	19.69	1.68	0.90	24.59	11.73	4.72
4750.00	11.21	21.03	15.68	19.45	1.74	0.91	24.01	11.27	4.86
5000.00	10.96	21.24	15.45	19.56	1.87	0.93	22.92	10.62	5.00
5250.00	10.69	21.74	14.13	19.70	1.87	0.94	22.72	10.07	5.08
5500.00	10.59	21.77	14.13	20.40	2.08	0.96	22.93	10.00	5.25
5750.00	10.37	22.57	12.83	19.81	2.07	0.98	22.00	9.52	5.36
6000.00	10.22	22.57	12.20	19.20	2.12	0.99	21.31	9.03	5.57
6250.00	9.99	22.67	11.59	18.55	2.18	1.01	21.55	8.95	5.58
6500.00	9.73	22.81	11.13	18.47	2.29	1.02	21.41	9.05	5.79
6750.00	9.67	23.35	10.69	17.40	2.29	1.03	20.39	8.75	5.87
7000.00	9.45	23.28	10.40	16.79	2.35	1.04	20.04	8.06	6.12

MMIC Amplifier

ERA-4+

Typical Performance Data

Definitions:

Input Return Loss = -S11 (dB)

Gain(Power Gain) = S21 (dB)

Reverse Isolation = -S12 (dB)

Output Return Loss = -S22 (dB)

TEST CONDITIONS: Id=65mA, Vd = 4.64V @Temperature = -45degC

FREQ	Gain	Isolation	Input Return Loss	Output Return Loss	Stability		IP-3 Output	1dB Comp. Output	Noise Figure
					K	Delta			
(MHz)	(dB)	(dB)	(dB)	(dB)	K	Delta	(dBm)	(dBm)	(dB)
10.00	14.49	18.94	36.65	41.53	1.13	0.64	37.28	17.74	3.55
50.00	14.52	19.05	31.82	38.95	1.14	0.65	37.27	18.20	3.52
100.00	14.49	19.02	30.82	37.17	1.14	0.65	37.22	18.06	3.51
200.00	14.46	19.04	30.60	34.34	1.14	0.65	36.76	17.89	3.45
300.00	14.43	19.07	36.91	35.98	1.15	0.66	36.71	17.83	3.54
400.00	14.40	19.05	37.88	35.26	1.15	0.66	36.14	17.98	3.60
500.00	14.36	19.04	37.61	33.43	1.15	0.66	35.77	18.07	3.58
600.00	14.32	19.05	38.08	31.23	1.15	0.66	35.27	17.87	3.56
700.00	14.27	19.04	34.92	30.03	1.15	0.67	34.88	17.82	3.53
800.00	14.23	19.02	35.21	28.46	1.15	0.67	34.78	17.84	3.51
900.00	14.19	19.04	32.90	27.39	1.16	0.67	34.60	18.00	3.50
1000.00	14.14	19.06	30.80	26.42	1.16	0.68	34.37	17.53	3.54
1100.00	14.08	19.05	29.83	25.35	1.16	0.68	34.45	17.74	3.47
1200.00	14.03	19.06	28.15	24.29	1.17	0.68	34.16	17.79	3.53
1300.00	13.98	19.08	27.18	23.32	1.17	0.69	34.07	17.75	3.51
1400.00	13.92	19.11	25.94	22.66	1.18	0.69	33.70	17.50	3.44
1500.00	13.86	19.13	24.99	21.88	1.18	0.70	33.54	17.48	3.52
1600.00	13.80	19.15	24.18	21.31	1.19	0.70	33.47	17.38	3.52
1700.00	13.74	19.17	23.70	20.74	1.19	0.71	33.19	17.37	3.48
1800.00	13.67	19.21	23.34	20.32	1.20	0.71	32.88	16.99	3.57
1900.00	13.60	19.23	22.84	19.96	1.21	0.72	32.74	16.87	3.55
2000.00	13.53	19.28	22.18	19.33	1.22	0.72	32.48	16.79	3.52
2250.00	13.37	19.34	21.18	18.79	1.23	0.73	31.34	16.09	3.48
2500.00	13.20	19.45	21.08	18.86	1.26	0.75	30.63	15.89	3.57
2750.00	13.01	19.54	21.12	19.28	1.28	0.77	30.07	15.43	3.50
3000.00	12.84	19.63	21.95	19.75	1.34	0.80	29.22	14.79	3.42
3250.00	12.64	19.78	21.12	19.96	1.38	0.81	28.12	14.04	3.60
3500.00	12.46	19.90	21.00	20.04	1.42	0.83	27.58	13.59	3.62
3750.00	12.26	20.09	19.94	19.79	1.46	0.84	27.30	12.97	3.72
4000.00	12.06	20.25	19.04	19.74	1.50	0.85	26.34	12.61	3.71
4250.00	11.91	20.39	17.61	19.83	1.55	0.87	25.49	12.02	3.71
4500.00	11.73	20.64	16.77	19.32	1.60	0.88	25.49	11.82	3.74
4750.00	11.51	20.80	15.48	18.55	1.70	0.90	24.80	11.39	3.84
5000.00	11.15	21.19	14.39	17.92	1.73	0.91	23.47	10.70	3.88
5250.00	10.96	21.30	13.26	17.83	1.75	0.93	23.45	10.19	4.03
5500.00	10.79	21.33	12.78	18.89	1.86	0.95	23.61	10.11	4.08
5750.00	10.68	21.93	12.36	19.20	1.94	0.97	22.41	9.62	4.16
6000.00	10.56	22.27	11.24	18.02	1.91	0.99	21.78	9.11	4.37
6250.00	10.24	22.07	11.27	18.18	2.03	1.00	22.22	9.20	4.41
6500.00	10.00	22.45	11.54	18.84	2.17	1.01	22.05	9.29	4.59
6750.00	9.82	22.88	10.95	17.73	2.11	1.02	20.61	9.07	4.58
7000.00	10.06	23.08	11.05	17.22	2.20	1.02	20.49	8.44	4.85

Typical Performance Data

Definitions:

Input Return Loss = -S11 (dB)

Gain(Power Gain) = S21 (dB)

Reverse Isolation = -S12 (dB)

Output Return Loss = -S22 (dB)

TEST CONDITIONS: Id= 52mA; Vd= 4.52V; @ Temperature = -45 deg C

FREQ	Gain	Isolation	Input Return Loss	Output Return Loss	Stability		IP-3 Output	1dB Comp. Output	Noise Figure
					K	Delta			
(MHz)	(dB)	(dB)	(dB)	(dB)	K	Delta	(dBm)	(dBm)	(dB)
10.00	14.40	19.40	34.71	35.79	1.17	0.68	33.64	16.33	3.45
50.00	14.42	18.97	29.71	34.32	1.14	0.65	33.35	16.46	3.45
100.00	14.39	19.04	28.86	33.18	1.15	0.66	33.28	16.26	3.44
200.00	14.36	18.96	28.70	31.46	1.14	0.65	33.05	16.10	3.40
300.00	14.33	18.96	33.44	34.65	1.14	0.66	33.27	16.09	3.50
400.00	14.30	18.96	35.27	36.02	1.15	0.66	32.97	16.24	3.53
500.00	14.26	18.97	35.95	34.70	1.15	0.66	33.05	16.43	3.55
600.00	14.23	18.93	38.17	32.42	1.15	0.66	32.97	16.25	3.47
700.00	14.18	18.94	36.88	31.33	1.15	0.67	32.74	16.15	3.41
800.00	14.14	18.96	37.47	29.65	1.16	0.67	32.69	16.27	3.37
900.00	14.10	18.95	34.86	28.39	1.16	0.67	32.71	16.32	3.42
1000.00	14.05	18.96	32.66	27.40	1.16	0.68	32.32	15.73	3.44
1100.00	14.00	18.99	31.74	26.19	1.17	0.68	32.20	16.05	3.41
1200.00	13.95	19.00	29.75	25.08	1.17	0.69	32.45	16.15	3.46
1300.00	13.89	19.00	28.80	24.04	1.17	0.69	32.31	16.15	3.42
1400.00	13.83	19.05	27.26	23.38	1.18	0.70	32.20	16.03	3.34
1500.00	13.78	19.06	26.18	22.52	1.18	0.70	32.24	16.34	3.37
1600.00	13.71	19.08	25.28	21.90	1.19	0.70	32.04	16.21	3.38
1700.00	13.66	19.09	24.73	21.29	1.19	0.71	31.91	16.26	3.38
1800.00	13.59	19.13	24.33	20.83	1.20	0.71	31.60	16.10	3.50
1900.00	13.52	19.17	23.67	20.47	1.21	0.72	31.49	15.91	3.44
2000.00	13.45	19.21	22.97	19.79	1.22	0.72	30.99	15.67	3.42
2250.00	13.29	19.29	21.83	19.24	1.24	0.74	30.29	15.31	3.37
2500.00	13.12	19.37	21.58	19.30	1.26	0.75	29.56	15.03	3.47
2750.00	12.94	19.45	21.60	19.76	1.28	0.77	29.01	14.59	3.45
3000.00	12.77	19.57	22.24	20.24	1.35	0.80	28.19	13.95	3.37
3250.00	12.56	19.75	21.31	20.44	1.38	0.81	27.11	13.24	3.46
3500.00	12.38	19.86	21.13	20.52	1.42	0.83	26.64	12.77	3.52
3750.00	12.19	20.04	20.08	20.28	1.47	0.84	26.36	12.13	3.58
4000.00	11.98	20.23	19.09	20.19	1.50	0.85	25.47	11.78	3.54
4250.00	11.82	20.35	17.64	20.22	1.55	0.87	24.62	11.21	3.61
4500.00	11.64	20.58	16.69	19.79	1.61	0.88	24.53	11.08	3.60
4750.00	11.41	20.78	15.53	18.97	1.71	0.91	23.90	10.56	3.69
5000.00	11.08	21.16	14.37	18.46	1.74	0.92	22.60	9.92	3.75
5250.00	10.90	21.29	13.26	17.95	1.78	0.93	22.57	9.34	3.84
5500.00	10.65	21.35	12.62	19.33	1.88	0.96	22.80	9.27	3.94
5750.00	10.59	21.92	12.14	19.64	1.96	0.98	21.53	8.80	4.11
6000.00	10.43	22.31	11.05	18.23	1.95	1.00	20.76	8.30	4.23
6250.00	10.13	22.18	11.02	18.57	2.05	1.01	21.22	8.45	4.25
6500.00	9.88	22.44	11.42	18.79	2.15	1.01	20.96	8.49	4.46
6750.00	9.80	22.81	10.56	17.45	2.15	1.03	19.60	8.25	4.36
7000.00	9.88	23.17	10.65	17.13	2.26	1.04	19.38	7.80	4.53

MMIC Amplifier

ERA-4+

Typical Performance Data

Definitions:

Input Return Loss = -S11 (dB)

Gain(Power Gain) = S21 (dB)

Reverse Isolation = -S12 (dB)

Output Return Loss = -S22 (dB)

TEST CONDITIONS: Id=78mA, Vd = 4.74V @Temperature = -45degC

FREQ	Gain	Isolation	Input Return Loss	Output Return Loss	Stability		IP-3 Output	1dB Comp. Output	Noise Figure
					K	Delta			
(MHz)	(dB)	(dB)	(dB)	(dB)	K	Delta	(dBm)	(dBm)	(dB)
10.00	14.53	18.76	50.30	40.98	1.12	0.62	39.04	18.29	3.68
50.00	14.58	19.13	33.72	45.70	1.14	0.65	39.90	18.99	3.64
100.00	14.55	19.07	32.02	41.55	1.14	0.65	39.87	18.88	3.59
200.00	14.52	19.11	32.14	36.57	1.14	0.65	39.41	18.75	3.58
300.00	14.49	19.09	40.22	35.40	1.14	0.65	39.41	18.78	3.67
400.00	14.46	19.11	38.67	34.04	1.15	0.66	38.07	19.02	3.72
500.00	14.42	19.07	37.13	32.17	1.15	0.66	37.37	19.10	3.77
600.00	14.38	19.08	36.76	30.06	1.15	0.66	35.89	18.87	3.63
700.00	14.33	19.09	33.51	29.06	1.15	0.66	36.22	18.86	3.62
800.00	14.29	19.09	33.43	27.68	1.15	0.67	35.95	18.79	3.68
900.00	14.25	19.08	31.38	26.65	1.16	0.67	35.58	19.03	3.63
1000.00	14.20	19.08	29.57	25.80	1.16	0.67	35.52	18.65	3.71
1100.00	14.14	19.10	28.76	24.77	1.16	0.68	35.63	18.73	3.58
1200.00	14.09	19.12	27.06	23.77	1.17	0.68	35.04	18.70	3.67
1300.00	14.04	19.13	26.24	22.83	1.17	0.69	35.04	18.61	3.62
1400.00	13.98	19.16	25.09	22.21	1.18	0.69	34.66	18.22	3.55
1500.00	13.92	19.19	24.26	21.48	1.18	0.70	34.22	17.99	3.58
1600.00	13.85	19.19	23.49	20.92	1.19	0.70	34.31	17.91	3.64
1700.00	13.80	19.23	23.04	20.37	1.19	0.71	33.99	17.88	3.61
1800.00	13.72	19.24	22.72	19.96	1.20	0.71	33.53	17.48	3.66
1900.00	13.66	19.29	22.26	19.64	1.21	0.72	33.65	17.35	3.60
2000.00	13.59	19.34	21.64	18.99	1.21	0.72	33.14	17.38	3.61
2250.00	13.42	19.39	20.77	18.51	1.23	0.73	31.91	16.58	3.61
2500.00	13.25	19.49	20.65	18.57	1.26	0.75	31.31	16.43	3.69
2750.00	13.07	19.57	20.76	19.02	1.28	0.76	30.73	16.01	3.66
3000.00	12.90	19.69	21.70	19.53	1.34	0.80	29.83	15.42	3.59
3250.00	12.71	19.84	20.90	19.70	1.37	0.81	28.90	14.73	3.73
3500.00	12.52	19.95	20.84	19.73	1.42	0.83	28.26	14.30	3.79
3750.00	12.32	20.15	19.80	19.52	1.46	0.84	27.97	13.70	3.81
4000.00	12.13	20.30	18.92	19.48	1.49	0.85	27.13	13.34	3.78
4250.00	11.97	20.42	17.56	19.43	1.54	0.87	26.33	12.72	3.83
4500.00	11.79	20.65	16.66	19.02	1.59	0.88	26.10	12.57	3.87
4750.00	11.57	20.81	15.52	17.98	1.69	0.90	25.48	12.12	4.01
5000.00	11.24	21.21	14.46	17.80	1.72	0.91	24.17	11.40	4.07
5250.00	11.03	21.30	13.17	17.39	1.73	0.92	24.19	10.92	4.17
5500.00	10.88	21.29	12.89	18.67	1.83	0.95	24.53	10.86	4.29
5750.00	10.77	21.84	12.64	18.82	1.93	0.96	23.28	10.35	4.35
6000.00	10.66	22.30	11.37	17.81	1.88	0.98	22.63	9.90	4.52
6250.00	10.38	22.02	11.58	18.05	2.00	0.99	23.14	9.95	4.57
6500.00	10.14	22.36	11.85	18.57	2.13	1.00	22.86	10.05	4.74
6750.00	9.97	22.79	11.10	17.98	2.09	1.02	21.56	9.80	4.68
7000.00	10.15	23.02	11.16	17.80	2.17	1.02	21.35	9.28	4.99

MMIC Amplifier

ERA-4+

Typical Performance Data

Definitions:

Input Return Loss = -S11 (dB)

Gain(Power Gain) = S21 (dB)

Reverse Isolation = -S12 (dB)

Output Return Loss = -S22 (dB)

TEST CONDITIONS: Id=65mA, Vd = 4.26V @Temperature = +85degC

FREQ	Gain	Isolation	Input Return Loss	Output Return Loss	Stability		IP-3 Output	1dB Comp. Output	Noise Figure
					K	Delta			
(MHz)	(dB)	(dB)	(dB)	(dB)	K	Delta	(dBm)	(dBm)	(dB)
10.00	14.31	18.80	38.62	44.01	1.14	0.64	36.04	17.17	4.60
50.00	14.34	18.97	41.76	51.25	1.15	0.66	35.79	17.53	4.63
100.00	14.31	18.98	44.26	39.80	1.15	0.66	35.71	17.41	4.61
200.00	14.27	18.98	41.59	42.05	1.15	0.66	35.41	17.29	4.58
300.00	14.22	19.00	42.05	39.31	1.16	0.67	35.40	17.24	4.70
400.00	14.17	19.00	41.50	37.62	1.16	0.67	34.84	17.42	4.79
500.00	14.12	19.00	38.39	35.85	1.16	0.67	34.54	17.44	4.81
600.00	14.08	19.04	40.39	32.47	1.17	0.68	34.25	17.19	4.83
700.00	14.02	19.01	37.63	30.79	1.17	0.68	33.43	17.17	4.82
800.00	13.97	19.06	36.36	29.43	1.17	0.69	33.44	17.10	4.78
900.00	13.92	19.05	34.28	28.09	1.18	0.69	33.28	17.29	4.82
1000.00	13.86	19.07	33.19	27.07	1.18	0.70	32.95	16.89	4.81
1100.00	13.80	19.08	32.14	25.94	1.19	0.70	32.74	16.97	4.80
1200.00	13.74	19.11	30.84	25.05	1.19	0.71	32.41	16.91	4.87
1300.00	13.67	19.16	29.80	24.27	1.20	0.71	32.24	16.84	4.87
1400.00	13.61	19.16	28.72	23.55	1.21	0.72	31.77	16.40	4.82
1500.00	13.54	19.20	28.02	22.98	1.21	0.72	31.38	16.23	4.83
1600.00	13.47	19.21	27.30	22.44	1.22	0.73	31.24	16.12	4.86
1700.00	13.40	19.26	26.37	21.87	1.23	0.73	31.07	16.09	4.84
1800.00	13.33	19.28	25.89	21.52	1.24	0.74	30.61	15.71	4.87
1900.00	13.25	19.33	25.34	21.19	1.25	0.75	30.43	15.54	4.93
2000.00	13.17	19.38	25.03	20.82	1.26	0.75	30.21	15.49	4.90
2250.00	12.99	19.49	23.89	20.36	1.28	0.77	28.70	14.59	4.89
2500.00	12.79	19.60	23.48	20.22	1.31	0.78	27.98	14.39	5.07
2750.00	12.58	19.73	22.95	20.08	1.35	0.80	27.41	13.98	4.99
3000.00	12.38	19.88	21.97	20.34	1.43	0.83	26.49	13.26	4.94
3250.00	12.15	20.03	21.29	20.45	1.48	0.84	25.51	12.58	5.09
3500.00	11.94	20.24	20.62	20.83	1.53	0.86	25.01	12.11	5.16
3750.00	11.71	20.43	19.25	20.53	1.59	0.87	24.52	11.53	5.28
4000.00	11.48	20.62	18.15	20.67	1.64	0.89	23.75	11.16	5.22
4250.00	11.26	20.81	17.57	20.95	1.74	0.91	23.03	10.56	5.37
4500.00	11.02	21.18	16.02	20.90	1.77	0.92	22.56	10.27	5.37
4750.00	10.79	21.24	15.52	20.02	1.91	0.93	22.16	9.84	5.51
5000.00	10.40	21.66	14.81	20.84	2.02	0.95	21.37	9.26	5.61
5250.00	10.23	22.08	13.60	20.39	2.04	0.97	20.79	8.54	5.74
5500.00	9.99	22.08	12.83	20.43	2.11	0.99	20.69	8.31	5.87
5750.00	9.83	22.38	12.73	20.99	2.35	1.00	20.13	7.93	6.01
6000.00	9.64	23.27	11.82	18.89	2.32	1.01	19.54	7.35	6.18
6250.00	9.44	23.11	11.29	17.62	2.36	1.02	19.44	7.36	6.25
6500.00	9.14	23.12	11.29	18.47	2.77	1.04	19.28	7.50	6.34
6750.00	9.07	24.55	10.06	15.82	2.50	1.05	18.52	7.26	6.52
7000.00	8.90	23.83	9.66	15.24	2.51	1.06	18.11	6.57	6.79

MMIC Amplifier

ERA-4+

Typical Performance Data

Definitions:

Input Return Loss = -S11 (dB)

Gain(Power Gain) = S21 (dB)

Reverse Isolation = -S12 (dB)

Output Return Loss = -S22 (dB)

TEST CONDITIONS: Id=52mA, Vd = 4.13V @Temperature = +85degC

FREQ	Gain	Isolation	Input Return Loss	Output Return Loss	Stability		IP-3 Output	1dB Comp. Output	Noise Figure
					K	Delta			
(MHz)	(dB)	(dB)	(dB)	(dB)	K	Delta	(dBm)	(dBm)	(dB)
10.00	14.19	18.65	34.30	32.36	1.13	0.64	32.42	15.89	4.52
50.00	14.21	18.88	35.59	37.75	1.15	0.66	32.18	16.14	4.52
100.00	14.18	18.91	36.46	37.42	1.15	0.66	32.28	16.08	4.52
200.00	14.14	18.90	35.75	39.83	1.15	0.67	32.09	15.91	4.53
300.00	14.10	18.90	35.35	37.98	1.16	0.67	32.16	15.83	4.62
400.00	14.05	18.90	36.49	37.32	1.16	0.67	31.84	15.95	4.76
500.00	14.00	18.90	35.33	35.64	1.16	0.68	31.90	16.06	4.66
600.00	13.96	18.91	37.46	33.12	1.17	0.68	31.87	15.86	4.75
700.00	13.90	18.92	38.33	31.89	1.17	0.69	31.56	15.78	4.72
800.00	13.85	18.93	38.26	30.65	1.17	0.69	31.44	15.82	4.68
900.00	13.80	18.96	37.44	29.19	1.18	0.69	31.30	15.92	4.70
1000.00	13.74	18.98	36.16	28.18	1.19	0.70	30.91	15.43	4.73
1100.00	13.68	19.01	35.50	27.01	1.19	0.71	30.89	15.67	4.71
1200.00	13.62	19.01	34.00	26.07	1.20	0.71	30.85	15.68	4.74
1300.00	13.56	19.03	32.56	25.24	1.20	0.71	30.64	15.66	4.75
1400.00	13.50	19.06	31.18	24.49	1.21	0.72	30.42	15.40	4.69
1500.00	13.43	19.10	30.35	23.89	1.22	0.73	30.13	15.45	4.74
1600.00	13.36	19.12	29.40	23.27	1.22	0.73	30.00	15.34	4.78
1700.00	13.29	19.16	28.22	22.72	1.23	0.74	29.76	15.29	4.73
1800.00	13.22	19.18	27.60	22.33	1.24	0.74	29.48	15.01	4.85
1900.00	13.15	19.22	26.89	21.94	1.25	0.75	29.26	14.83	4.82
2000.00	13.06	19.29	26.53	21.51	1.26	0.75	28.79	14.68	4.75
2250.00	12.89	19.40	25.05	21.06	1.29	0.77	27.60	13.93	4.79
2500.00	12.69	19.50	24.36	20.87	1.32	0.78	26.84	13.62	4.88
2750.00	12.48	19.65	23.70	20.75	1.35	0.80	26.42	13.21	4.86
3000.00	12.27	19.81	22.36	20.94	1.43	0.83	25.46	12.47	4.83
3250.00	12.06	19.97	21.53	21.21	1.49	0.85	24.53	11.79	4.93
3500.00	11.81	20.17	20.77	21.39	1.54	0.86	23.94	11.29	5.00
3750.00	11.61	20.38	19.33	21.19	1.60	0.88	23.43	10.69	5.09
4000.00	11.36	20.56	18.14	21.26	1.66	0.89	22.72	10.35	5.09
4250.00	11.14	20.77	17.50	21.69	1.75	0.91	22.11	9.77	5.18
4500.00	10.89	21.11	15.88	21.47	1.79	0.92	21.57	9.41	5.18
4750.00	10.65	21.19	15.53	20.95	1.94	0.94	21.14	9.03	5.30
5000.00	10.25	21.64	14.50	21.71	2.04	0.96	20.33	8.40	5.49
5250.00	10.09	22.09	13.31	20.50	2.06	0.97	19.76	7.66	5.55
5500.00	9.87	22.09	12.60	20.55	2.16	0.99	19.70	7.47	5.65
5750.00	9.68	22.47	12.59	21.51	2.38	1.01	19.08	7.10	5.86
6000.00	9.52	23.28	11.60	18.90	2.35	1.02	18.47	6.57	5.96
6250.00	9.27	23.13	10.93	17.58	2.39	1.03	18.31	6.56	6.08
6500.00	8.92	23.11	11.21	18.46	2.84	1.04	18.20	6.65	6.19
6750.00	8.89	24.61	9.83	15.87	2.55	1.06	17.44	6.53	6.28
7000.00	8.68	23.87	9.54	15.23	2.62	1.07	17.01	5.81	6.56

MMIC Amplifier

ERA-4+

Typical Performance Data

Definitions:

Input Return Loss = -S11 (dB)

Gain(Power Gain) = S21 (dB)

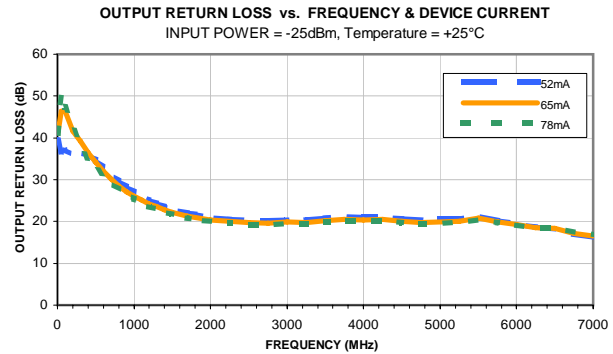
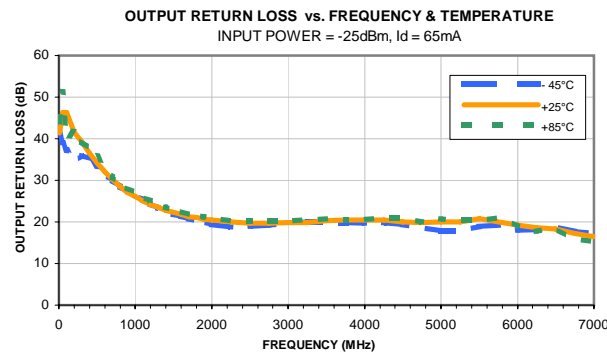
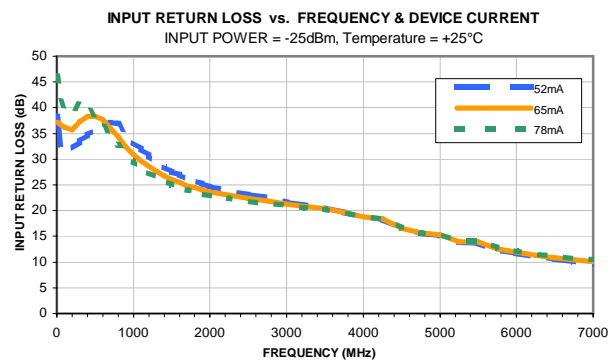
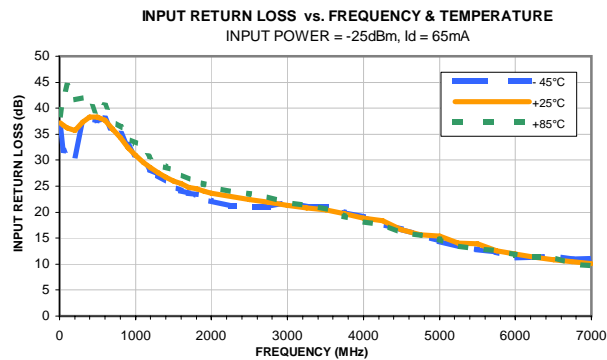
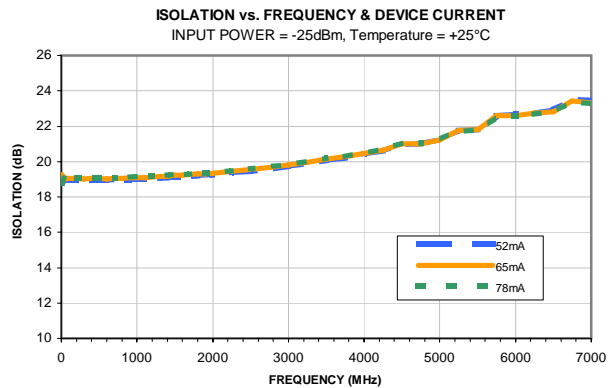
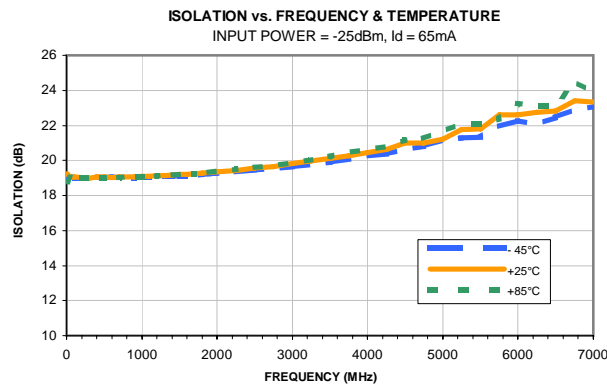
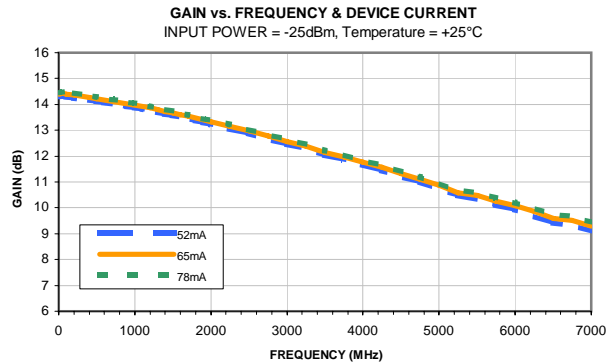
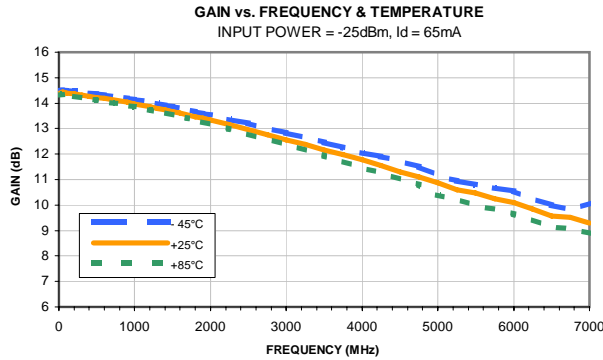
Reverse Isolation = -S12 (dB)

Output Return Loss = -S22 (dB)

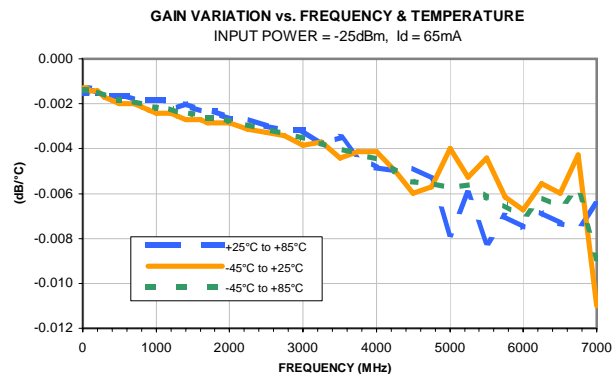
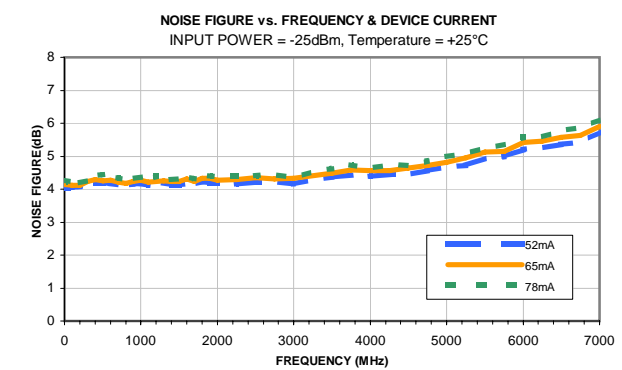
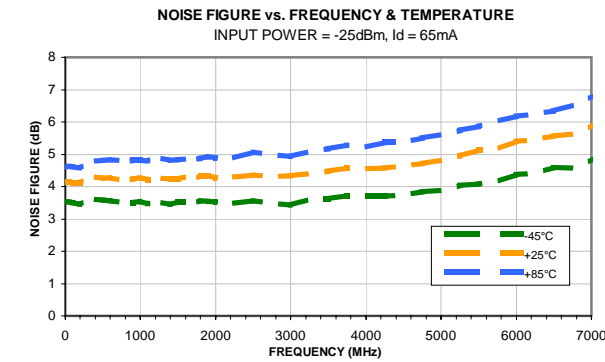
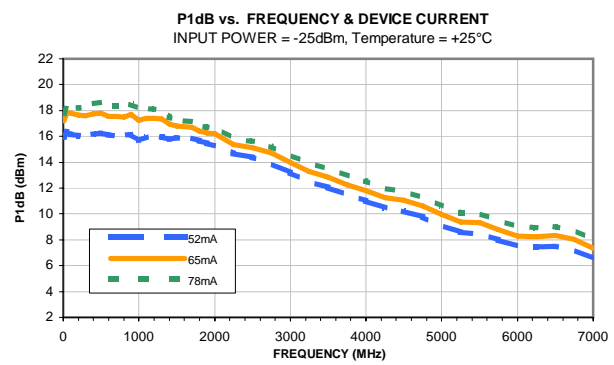
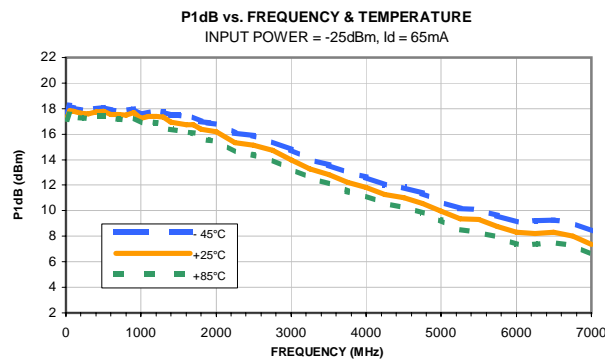
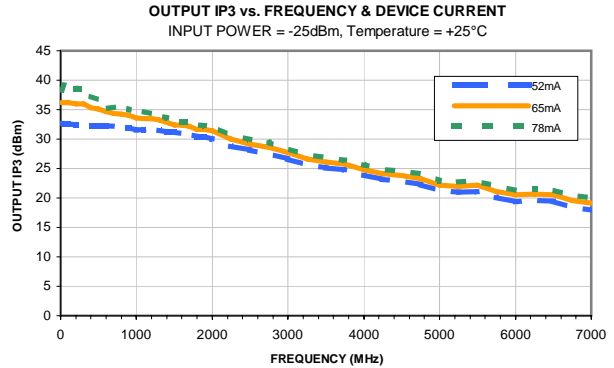
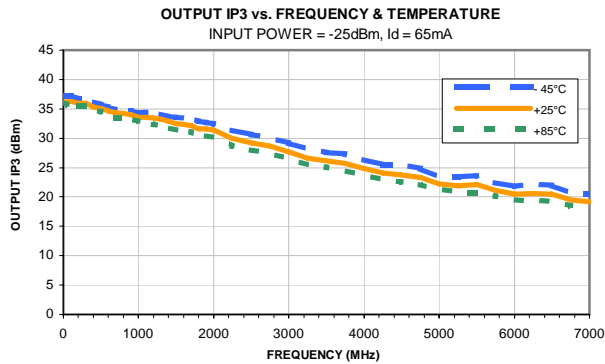
TEST CONDITIONS: Id=78mA, Vd = 4.40V @Temperature = +85degC

FREQ	Gain	Isolation	Input Return Loss	Output Return Loss	Stability		IP-3 Output	1dB Comp. Output	Noise Figure
					K	Delta			
(MHz)	(dB)	(dB)	(dB)	(dB)	K	Delta	(dBm)	(dBm)	(dB)
10.00	14.41	19.01	39.31	40.90	1.14	0.65	38.29	17.30	4.74
50.00	14.42	19.04	47.21	45.42	1.15	0.66	38.93	17.85	4.76
100.00	14.39	19.10	50.80	37.79	1.15	0.66	39.20	17.79	4.78
200.00	14.34	19.06	43.72	38.02	1.15	0.66	38.59	17.67	4.73
300.00	14.30	19.07	49.08	36.71	1.15	0.67	38.10	17.74	4.95
400.00	14.25	19.07	41.47	35.31	1.16	0.67	37.29	18.02	4.94
500.00	14.20	19.08	38.48	34.03	1.16	0.68	36.35	18.13	5.03
600.00	14.15	19.07	38.69	31.24	1.16	0.68	35.32	17.88	4.98
700.00	14.09	19.10	35.47	29.63	1.17	0.68	35.27	17.85	4.93
800.00	14.04	19.11	34.11	28.40	1.17	0.69	34.86	17.76	4.88
900.00	13.99	19.11	32.24	27.14	1.18	0.69	34.60	17.95	4.94
1000.00	13.93	19.13	31.22	26.17	1.18	0.70	34.11	17.69	4.98
1100.00	13.87	19.15	30.30	25.12	1.19	0.70	33.72	17.62	4.95
1200.00	13.81	19.18	29.16	24.32	1.19	0.71	33.42	17.50	4.92
1300.00	13.74	19.20	28.29	23.60	1.20	0.71	33.14	17.40	4.97
1400.00	13.68	19.22	27.27	22.87	1.20	0.72	32.60	16.86	4.96
1500.00	13.61	19.25	26.72	22.39	1.21	0.72	31.87	16.65	4.97
1600.00	13.54	19.28	26.13	21.86	1.22	0.73	31.83	16.55	4.98
1700.00	13.47	19.30	25.27	21.31	1.23	0.73	31.75	16.51	4.99
1800.00	13.40	19.36	24.87	20.99	1.24	0.74	31.22	16.13	5.10
1900.00	13.32	19.37	24.40	20.69	1.24	0.74	31.06	15.97	5.07
2000.00	13.24	19.44	24.15	20.32	1.26	0.75	30.82	15.94	5.06
2250.00	13.06	19.53	23.19	19.91	1.28	0.76	29.39	15.04	5.04
2500.00	12.86	19.65	22.80	19.76	1.31	0.78	28.63	14.89	5.34
2750.00	12.65	19.78	22.42	19.65	1.34	0.79	27.99	14.53	5.14
3000.00	12.45	19.91	21.57	19.92	1.42	0.83	27.13	13.82	5.11
3250.00	12.23	20.07	20.95	20.04	1.47	0.84	26.18	13.20	5.25
3500.00	12.00	20.26	20.44	20.36	1.52	0.86	25.61	12.74	5.34
3750.00	11.79	20.45	19.11	20.18	1.58	0.87	25.12	12.18	5.47
4000.00	11.57	20.65	18.13	20.29	1.64	0.89	24.35	11.76	5.40
4250.00	11.34	20.84	17.44	20.67	1.72	0.90	23.71	11.19	5.53
4500.00	11.12	21.20	16.01	20.55	1.76	0.92	23.28	10.90	5.55
4750.00	10.89	21.25	15.50	19.87	1.89	0.93	22.84	10.52	5.78
5000.00	10.48	21.63	14.91	20.68	2.01	0.95	22.00	9.87	5.88
5250.00	10.32	22.15	13.75	20.24	2.02	0.96	21.55	9.18	5.97
5500.00	10.10	22.06	13.08	20.18	2.10	0.98	21.47	8.97	6.10
5750.00	9.95	22.39	12.85	21.53	2.29	1.00	20.86	8.59	6.24
6000.00	9.78	23.11	11.99	19.45	2.27	1.01	20.27	8.07	6.39
6250.00	9.57	22.98	11.36	17.98	2.31	1.02	20.20	8.06	6.48
6500.00	9.26	23.02	11.60	18.98	2.71	1.03	20.13	8.18	6.61
6750.00	9.21	24.41	10.14	16.12	2.42	1.05	19.31	7.94	6.74
7000.00	9.08	23.68	9.83	15.38	2.46	1.05	18.90	7.29	6.99

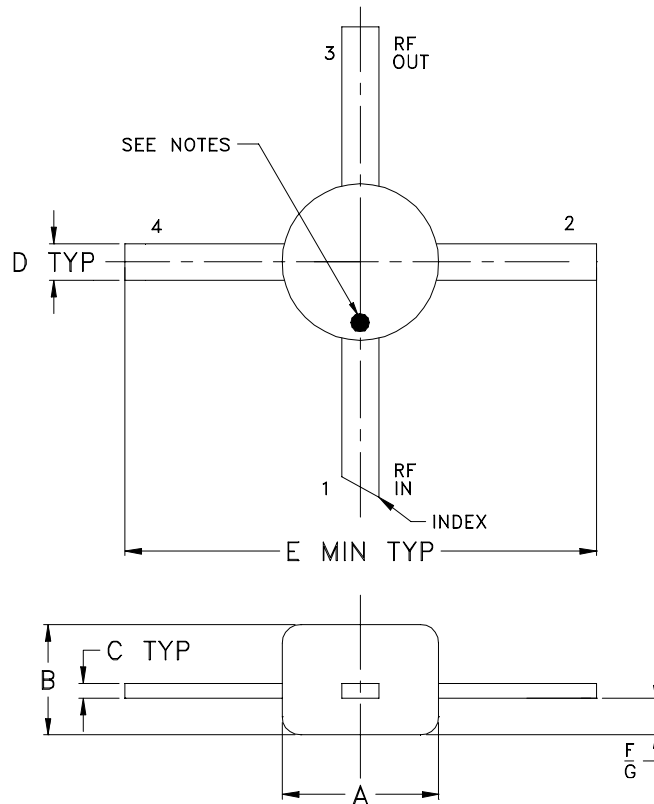
Typical Performance Curves



Typical Performance Curves



Outline Dimensions



CASE#	A	B	C	D	E	F	G	WT.GRAMS
VV105	.085 (2.16)	.060 (1.52)	.008 (0.20)	.020 (0.51)	.250 (6.35)	.012 (0.30)	.025 (0.64)	.015

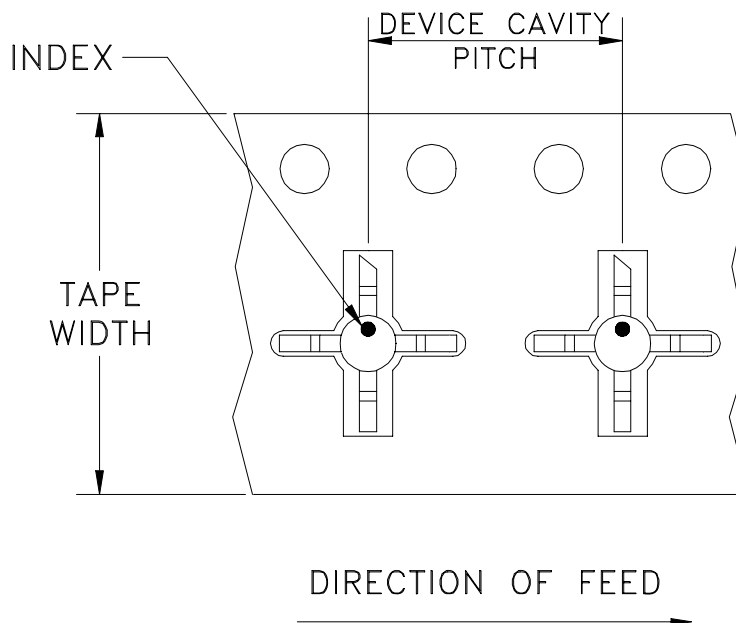
Dimensions are in inches (mm). Tolerances: 2 Pl. $\pm .03$; 3 Pl. $\pm .015$

Notes:

- Case material: Plastic.
- Termination finish:
For RoHS Case Styles: Tin-Silver alloy plate over Nickel barrier.
For RoHS-5 Case Styles: Tin-Lead plate.
- RF input termination (1) identified by one or both of the following at factory option:
 - diagonally cut termination, which be 45° (ref) in either direction;
 - orientation mark on the case. Model dash number is identified by color dot or alphanumeric code on case. See specification data sheet.
- Special Tolerances: Termination width $\pm .005$ inch, termination thickness $\pm .003$ inch.

Tape & Reel Packaging TR-F4

DEVICE ORIENTATION IN T&R



Tape Width, mm	Device Cavity Pitch, mm	Reel Size, inches	Devices per Reel	
12	8	7	Small quantity standards (see note)	20
				50
				100
				200
				500
		7	Standard	1000

Note: Please Consult individual model data sheet to determine device per reel availability.

Mini-Circuits carrier tape materials provide protection from ESD (Electro-Static Discharge) during handling and transportation. Tapes are static dissipative and comply with industry standards EIA-481/EIA-541.

Go to: www.minicircuits.com/pages/pdfs/tape.pdf



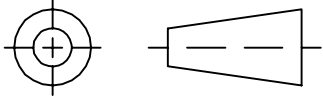
INTERNET <http://www.minicircuits.com>

P.O. Box 350166, Brooklyn, New York 11235-0003 (718) 934-4500 Fax (718) 332-4661

Distribution Centers NORTH AMERICA 800-654-7949 • 417-335-5935 • Fax 417-335-5945 • EUROPE 44-1252-832600 • Fax 44-1252-837010

Mini-Circuits ISO 9001 & ISO 14001 Certified

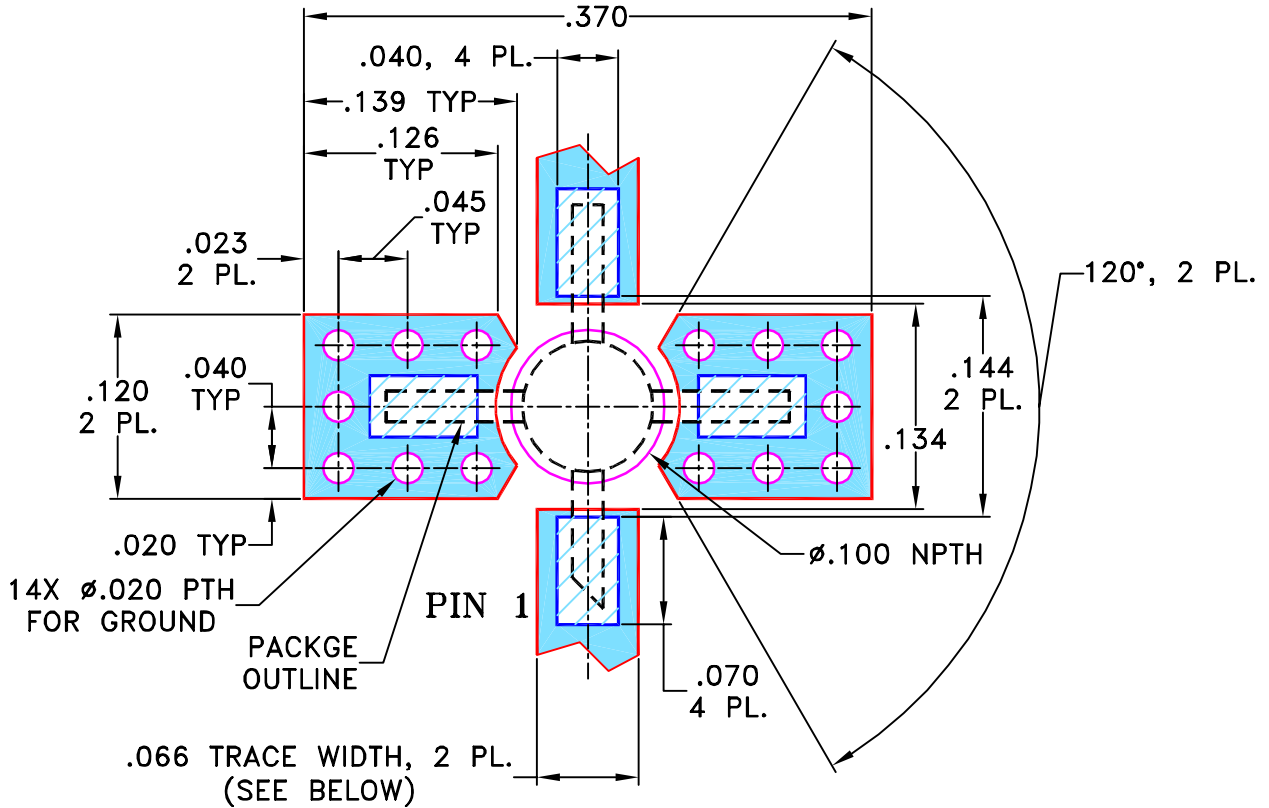
THIRD ANGLE PROJECTION



REVISIONS

REV OR	ECN No.	DESCRIPTION	DATE	DR	AUTH
	M109082	NEW RELEASE	12/29/06	AV	IG

SUGGESTED MOUNTING CONFIGURATION FOR VV105 CASE STYLE, "cb" PIN CONNECTION



NOTES:

1. TRACE WIDTH IS SHOWN FOR ROGERS RO4350B WITH DIELECTRIC THICKNESS .030" ± .002"; COPPER: 1/2 OZ. EACH SIDE. FOR OTHER MATERIALS TRACE WIDTH MAY NEED TO BE MODIFIED.
2. BOTTOM SIDE OF THE PCB IS CONTINUOUS GROUND PLANE.

- DENOTES PCB COPPER LAYOUT WITH SMOBC (SOLDER MASK OVER BARE COPPER)
- DENOTES COPPER LAND PATTERN FREE OF SOLDER MASK

UNLESS OTHERWISE SPECIFIED	INITIALS		DATE
DIMENSIONS ARE IN INCHES TOLERANCES ON: 2 PL DECIMALS ± 3 PL DECIMALS ± .005 ANGLES ± FRACTIONS ±	DRAWN	AV	12/28/06
	CHECKED	IL	12/29/06
	APPROVED	IG	12/29/06

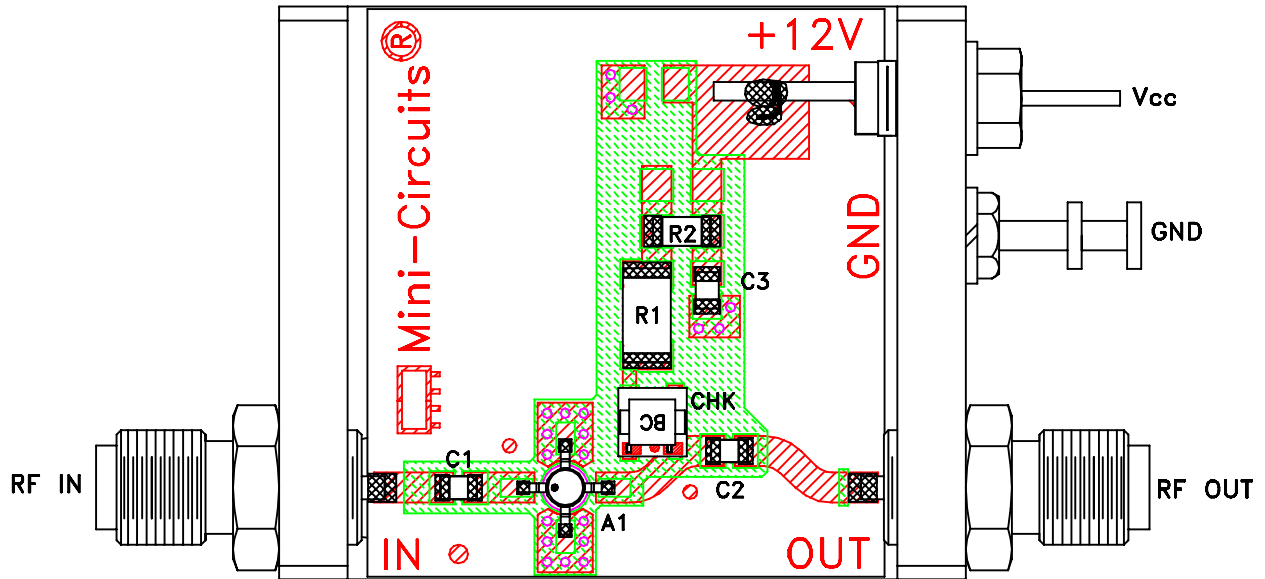
Mini-Circuits® 13 Neptune Avenue
Brooklyn NY 11235

PL, cb, VV105, ERA, TB-431-X+

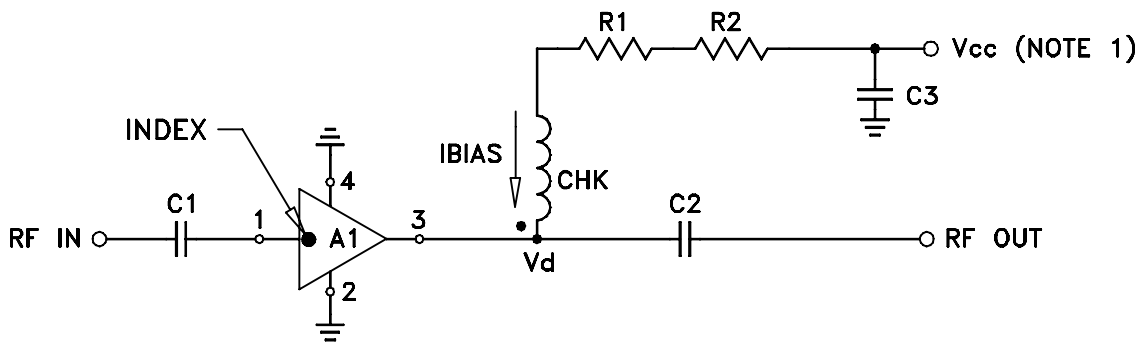
Mini-Circuits®
THIS DOCUMENT AND ITS CONTENTS ARE THE PROPERTY OF MINI-CIRCUITS. EXCEPT FOR USE EXPRESSLY GRANTED, IN WRITING, TO ITS VENDORS, VENDEE AND THE UNITED STATES GOVERNMENT, MINI-CIRCUITS RESERVES ALL PROPRIETARY DESIGN, USE, MANUFACTURING AND REPRODUCTION RIGHTS THERETO. THESE CONTENTS SHALL NOT BE USED, DUPLICATED OR DISCLOSED TO ANY OUTSIDE PARTY, IN WHOLE OR IN PART, WITHOUT WRITTEN PERMISSION OF MINI-CIRCUITS.

SIZE A	CODE IDENT 15542	DRAWING NO: 98-PL-261	REV: OR
FILE: 98PL261	SCALE: 8:1	SHEET: 1 OF 1	

Evaluation Board and Circuit



TB-431-4+




COMPONENT	VALUE
A1	ERA-4(+)
C1 (NOTE 4)	2400 pF
C2 (NOTE 4)	2400 pF
C3 (bypass)	0.1 uF
R1	115 Ohms, 0.75W
R2	0 Ohm, 0.25W
CHK	Mini-Circuits TCCH-80+

Schematic Diagram

NOTE:

1. Vcc voltage: $+12 \pm 0.2V$.
2. SMA Female connectors.
3. PCB material: Rogers R04350 or equivalent, dielectric constant=3.5, dielectric thickness=.030 inch.
4. Capacitors, C1 & C2 should be free of resonance up to the highest frequency specified.

 **Mini-Circuits®**

All Mini-Circuits products are manufactured under exacting quality assurance and control standards, and are capable of meeting published specifications after being subjected to any or all of the following physical and environmental test.

Specification	Test/Inspection Condition	Reference/Spec
Operating Temperature	-45° to 85°C or -40° to 85°C Ambient Environment	Individual Model Data Sheet
Storage Temperature	-65° to 150° C Ambient Environment	Individual Model Data Sheet
Thermal Shock	-55° to 100°C, 100 cycles	MIL-STD-202, Method 107, Condition A-3, except +100°C
Mechanical Shock	1.5Kg, 0.5 ms, 5 shock pulses, Y1 direction only	MIL-STD-883, Method 2002, Condition B, except Y1 direction only
Vibration (Variable Frequency)	50g peak	MIL-STD-883, Method 2007, Condition B
Autoclave	15 psig, 100% RH, 121°C, 96 hours	JESD22-A102, Condition C
HAST	130°C, 85% RH, 96 hours	JESD22-A110
Solderability	10X Magnification	J-STD-002, Para 4.2.5, Test S, 95% Coverage
Solder Reflow Heat	Sn-Pb Eutetic Process: 240°C peak Pb-Free Process: 260°C peak	J-STD-020, Table 4-1, 4-2 and 5-2; Figure 5-1
Moisture Sensitivity: Level 1	Bake at 125°C for 24 hours Soak at 85°C/85% RH for 168 hours, Reflow 3 cycles at 260°C peak	J-STD-020
Marking Resistance to Solvents	Isopropyl alcohol + mineral spirits at 25°C; terpene defluxer at 25°C; distilled water + proylene glycol monomethyl ether +	MIL-STD-202, Method 215



All Mini-Circuits products are manufactured under exacting quality assurance and control standards, and are capable of meeting published specifications after being subjected to any or all of the following physical and environmental test.

Specification	Test/Inspection Condition	Reference/Spec
	monoethanolamine at 63°C to 70°C	