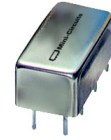


Bandpass Filter

50Ω Elliptic Response 25 to 45 MHz

PBP-35W+ PBP-35W



CASE STYLE: A01

Maximum Ratings

Operating Temperature	-40°C to 85°C
Storage Temperature	-55°C to 100°C
RF Power Input	0.5W at 25°C

Permanent damage may occur if any of these limits are exceeded.

Pin Connections

RF IN	1
RF OUT	8
GROUND	2,3,4,5,6,7
CASE GROUND	2,3,4,5,6,7

Features

- good return loss, 20 dB typ. @ pass band
- small size (0.77" X 0.40" X 0.40")
- rugged shielded case, hermetically sealed

Applications

- military
- harmonic rejection
- transmitters / receivers
- lab use

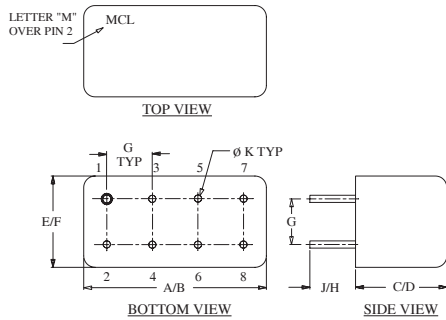
+RoHS Compliant

The +Suffix identifies RoHS Compliance. See our web site for RoHS Compliance methodologies and qualifications

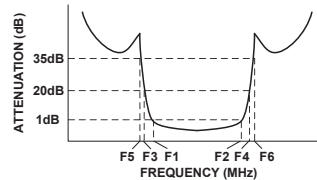
Bandpass Filter Electrical Specifications (T_{AMB} = 25°C)

MODEL NO.	CENTER FREQ. (MHz)	PASSBAND (MHz) (Loss < 1dB) F1 F2	STOPBANDS (MHz)				VSWR (:1)	
			Loss > 20dB F3 F4	Loss > 35dB F5 F6	Passband Max.	Stopband Typ.		
PBP-35W (+)	35	25 45	16 70	4 80-1000	1.5	18		

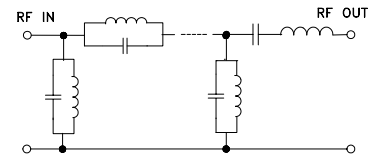
Outline Drawing



typical frequency response



electrical schematic



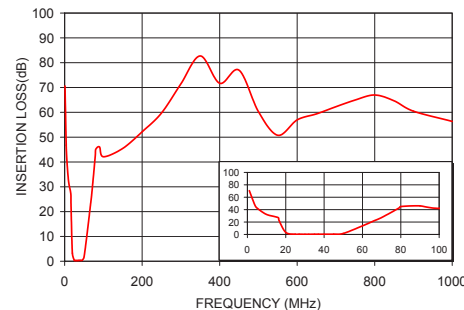
Typical Performance Data at 25°C

Frequency (MHz)	Insertion Loss (dB)	VSWR (:1)
1	70.61	289.50
4	46.78	157.90
16	27.21	79.00
25	0.34	1.20
35	0.30	1.10
45	0.41	1.00
60	13.78	35.50
70	27.31	86.90
80	45.00	102.20
100	42.09	108.60
300	71.50	72.40
500	60.28	51.10
700	62.27	51.10
900	60.48	44.60
1000	56.35	42.40

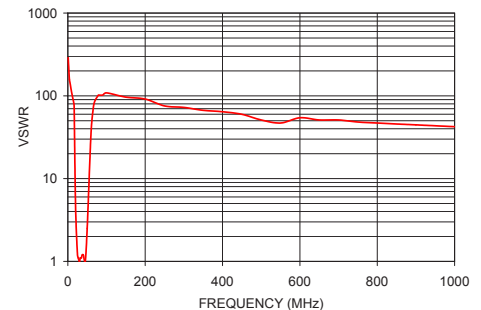
Outline Dimensions (inch/mm)

A	B	C	D	E	F
.770	.800	.385	.400	.370	.400
19.56	20.32	9.78	10.16	9.40	10.16
G	H	J	K	wt	
.200	.20	.14	.031	grams	
5.08	5.08	3.56	.79	5.2	

PBP-35W
INSERTION LOSS



PBP-35W
VSWR



Notes

- Performance and quality attributes and conditions not expressly stated in this specification document are intended to be excluded and do not form a part of this specification document.
- Electrical specifications and performance data contained in this specification document are based on Mini-Circuit's applicable established test performance criteria and measurement instructions.
- The parts covered by this specification document are subject to Mini-Circuits standard limited warranty and terms and conditions (collectively, "Standard Terms"); Purchasers of this part are entitled to the rights and benefits contained therein. For a full statement of the Standard Terms and the exclusive rights and remedies thereunder, please visit Mini-Circuits' website at www.minicircuits.com/MCLStore/terms.jsp

