

RESISTOR FLANGE MOUNT 250 WATT



DATA SHEET

PART SERIES: 31A1076XXF

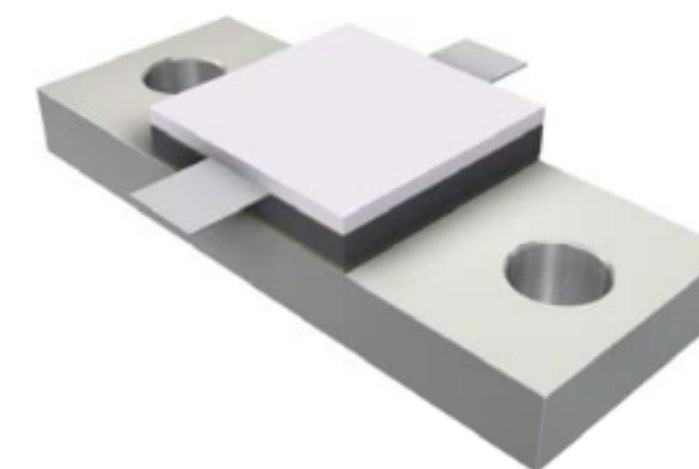
SHEET 1 OF 2
Dwg 31A1076FEN 13-3960
Revision-

FEATURES

- Tab Launch
- High Power
- Integrated Heat Sink
- Low Capacitance
- Easy Installation
- Wide Resistance Range

APPLICATIONS

- Broadcast
- High Power Filters
- High Power Amplifiers
- Isolators
- Military
- Instrumentation



GENERAL DESCRIPTION

EMC Technology offers the widest selection of flange mount resistors worldwide. High power flange components offer excellent performance and the convenience of bolt on installation.

ORDERING INFORMATION

Part Identifier:

31A1076XXF

Tolerance
Resistance Value

SPECIFICATIONS

1.0 ELECTRICAL

| | |
|-----------------------|--|
| Resistance Range: | 10 - 350 OHMS |
| Resistance Tolerance: | ±5% standard 1% and 2% available |
| Typical Capacitance: | 1.0 pF |
| Input Power CW: | 250 watts @ 100°C heat sink, derated linearly to zero power at 150°C |
| Peak Power: | 2500 watts (based on 10us pulse width and 1% duty cycle) |