

# GENERAL PRODUCT OVERVIEW



**JESIVA**  
transformers



Transformers & inductors since 1971

## INTRODUCCIÓN



Desde la fundación de Transformadores JESIVA en el año 1971, nuestro principal objetivo ha sido ofrecer el mejor servicio y calidad a nuestros clientes, obteniendo así su máxima satisfacción.

El cumplimiento de este objetivo nos llevó en 1994 a ser la primera empresa del sector en obtener la certificación ISO-9002, y 3 años más tarde la ISO-9001, que avalaban la calidad de nuestros procesos de gestión interna.

Durante este tiempo no hemos parado de innovar y buscar la mejor forma de satisfacer con nuestros productos las necesidades de cada cliente, y buena prueba de ello es que más del 80% de los productos que fabricamos están diseñados específicamente para nuestros clientes en todo el mundo, consiguiendo de esta forma el fuerte vínculo colaborador con ellos que tanto valoran.

Nuestra factoría en Vilamarxant (Valencia - España) dispone de más de 10000m<sup>2</sup>, los cuales garantizan nuestra gran capacidad de producción y agilidad de entregas, cualidades fundamentales y muy necesarias hoy en día para mantener nuestro actual liderazgo del mercado.

No dude en hacernos llegar sus consultas; nuestro equipo comercial sabrá ofrecerle la mejor solución a sus necesidades. Cuente con ello !!!

## INTRODUCTION



Since the founding of JESIVA Transformers in 1971, our main goal has been to offer the best service and quality to our customers and to provide maximum satisfaction.

The fulfilment of this goal enabled us in 1994 to become the first company in our sector to attain ISO-9002 certification, and 3 years later the ISO-9001, which guaranteed the quality of our internal management processes.

During this time we have not stopped innovating and strive to find the most effective way to meet the individual needs of each customer. As a result of this, over 80% of the products we are manufacturing are designed to our customer's specification and we liaise with customers around the world. Achieving a strong partner link with all of them is something that they value highly.

Our factory in Vilamarxant (Valencia - Spain) is in excess of 10000m<sup>2</sup>, which guarantees our high production capacity and prompt deliveries. These fundamental qualities are needed to maintain our current market leadership.

Feel free to send us your enquiries; our sales team know the best solution to meet your needs.

Consider it done !!!

## INTRODUCTION



Depuis la fondation de JESIVA en 1971, notre objectif principal a été d'offrir le meilleur service et la meilleure qualité à nos clients, en fournissant un maximum de satisfaction.

La réalisation de cet objectif nous a conduit en 1994 à devenir la première entreprise dans notre industrie à obtenir la certification ISO 9002, et 3 ans plus tard, la norme ISO-9001, qui garantissent la qualité de nos processus de gestion interne.

Pendant ce temps, nous n'avons pas cessé d'innover et de trouver la meilleure façon de répondre avec nos produits aux besoins de chaque client, et la preuve de ceci est que plus de 80% des produits que nous fabriquons sont conçus spécifiquement pour nos clients partout dans le monde, réalisant ainsi un lien fort avec JESIVA, qu'ils apprécient!

Notre usine à Vilamarxant (Valence - Espagne) de plus de 10000m<sup>2</sup>, garantit une capacité de production élevée et la rapidité de livraison, qualités fondamentales et biens nécessaires aujourd'hui pour maintenir notre leadership sur le marché actuel.

N'hésitez pas à nous envoyer vos questions; notre équipe commerciale connaît la meilleure solution à leurs besoins. Considérez que c'est fait !!!

## INTRODUÇÃO



Desde a fundação de Transformadores JESIVA em 1971, o nosso principal objetivo tem sido oferecer o melhor serviço e qualidade aos nossos clientes, proporcionando a máxima satisfação.

O cumprimento deste objetivo levou-nos em 1994 a ser a primeira empresa do nosso setor a obter certificação ISO-9002, e 3 anos depois, o ISO-9001, o que garantiu a qualidade dos nossos processos internos de gestão.

Durante este tempo, não paramos de inovar e encontrar a melhor maneira de conhecer qual o produto que cada cliente precisa, e prova disso é que mais de 80% dos produtos que fabricamos são projetados especificamente para os nossos clientes ao redor do mundo, conseguindo assim um vínculo forte com o parceiro que eles valorizam.

Nossa fábrica em Vilamarxant (Valencia - Espanha) tem mais de 10000m<sup>2</sup>, que garantem a nossa capacidade de produção e velocidade de entrega, qualidades fundamentais e muito necessárias hoje para manter nossa liderança no mercado atual.

Sinta-se livre para nos enviar as suas consultas, nossa equipa de vendas sabe qual a melhor solução para as suas necessidades. Considere-o feito !!!

## INTRODUZIONE



Dal momento della fondazione di Transformers JESIVA nel 1971, il nostro obiettivo principale è stato quello di offrire il miglior servizio e la qualità ai nostri clienti, puntando alla loro massima soddisfazione.

La realizzazione di questo obiettivo ci ha portato nel 1994 a diventare la prima azienda nel nostro settore ad ottenere la certificazione ISO-9002, e 3 anni dopo la ISO-9001, che ha garantito la qualità dei nostri processi interni di gestione.

Durante questo periodo non abbiamo smesso di innovare e di trovare il modo migliore per soddisfare con il nostro prodotto le necessità di ogni cliente, e la prova di questo è che oltre l'80% dei prodotti di nostra produzione sono stati progettati specificatamente per i nostri clienti in tutto il mondo, ottenendo così un forte legame che i nostri partner apprezzano.

La nostra fabbrica in Vilamarxant (Valencia - Spagna) ha più di 10000m<sup>2</sup>, con questo garantiamo una capacità di produzione ad alta velocità di consegna, qualità fondamentale e necessaria oggi per mantenere la nostra leadership nel mercato esistente.

Non esitate a inviarci le vostre domande, il nostro team di vendita conosce la migliore soluzione alle vostre esigenze.

## EINFÜHRUNG



Seit der Gründung der Firma "Transformadores JESIVA" im Jahr 1971 war es stets unser Hauptziel, den besten Service und die beste Qualität für unsere Kunden anzubieten, und dadurch deren maximale Zufriedenheit zu erreichen. Die Erfüllung dieses Ziels führte uns im Jahr 1994 dazu, das erste Unternehmen in unserer Branche zu sein, das die ISO-9002 Zertifizierung erhielt. 3 Jahre später wurde die ISO-9001 erreicht, die die Qualität unserer internen Managementprozesse garantiert.

Während dieser Zeit waren wir ständig innovativ und strebten danach, mit unseren Produkten die Bedürfnisse jedes einzelnen Kunden zu erfüllen. Der beste Beweis dafür ist, dass mehr als 80% der Produkte, die wir herstellen, spezifisch für unsere weltweiten Kunden konstruiert wurden, wodurch wir eine enge Zusammenarbeit und eine starke Verbindung zu jedem einzelnen haben, die sehr geschätzt wird.

Unsere Fabrik in Vilamarxant (Valencia - Spanien) hat mehr als 10000m<sup>2</sup>. Dies garantiert eine hohe Produktionskapazität und kurze und flexible Lieferzeiten; Qualitäten, die in der heutigen Zeit notwendig und wichtig sind um unsere aktuelle Marktführung zu erhalten. Bitte schicken Sie uns Ihre Anfragen; unser Sales-Team wird Ihnen die beste Lösung für Ihre Bedürfnisse anbieten.

Darauf können Sie zählen !!!



JESIVA's strategy has always been to collaborate very closely with our customers, in order to cope with all types of projects, and achieving the best results for both. This direct contact between JESIVA and our customers push our evolution in the market very positively.

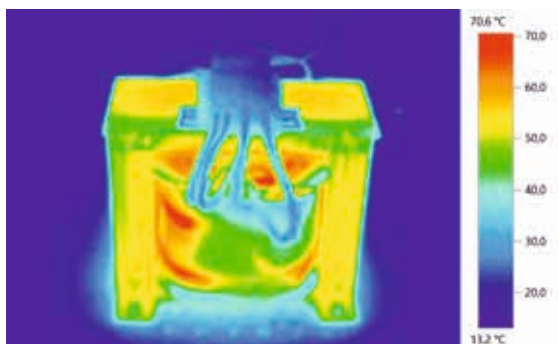


From sectors linked to electronics, such as video-intercom, lifting systems, public lighting ... even the sectors of railway systems or renewable energies, such as photovoltaics, we have been able to grow up to achieve a great recognition in international markets, focussed mainly in Europe and the US, with a total reach in more than 30 countries where we have more than 190 sales agents specifically trained to advise and help our clients in any project.



We have a large stock in our warehouse in order to offer an excellent service; even in less than 24 hours.

From Jesiva we want to thank our customers for the trust they have placed in our company during all these years, and we hope to continue satisfying at the same time we grow in the market.



Single phase insulation transformers is the most efficient solution when a compact design and a high insulation level between primary and secondary is required. These transformers are protected against rust and humidity by an epoxy varnish impregnation, which ensures a perfect behaviour during many years under any condition.

We can also design and manufacture any kind of autotransformer when it isn't necessary to have galvanic separation between primary and secondary windings.

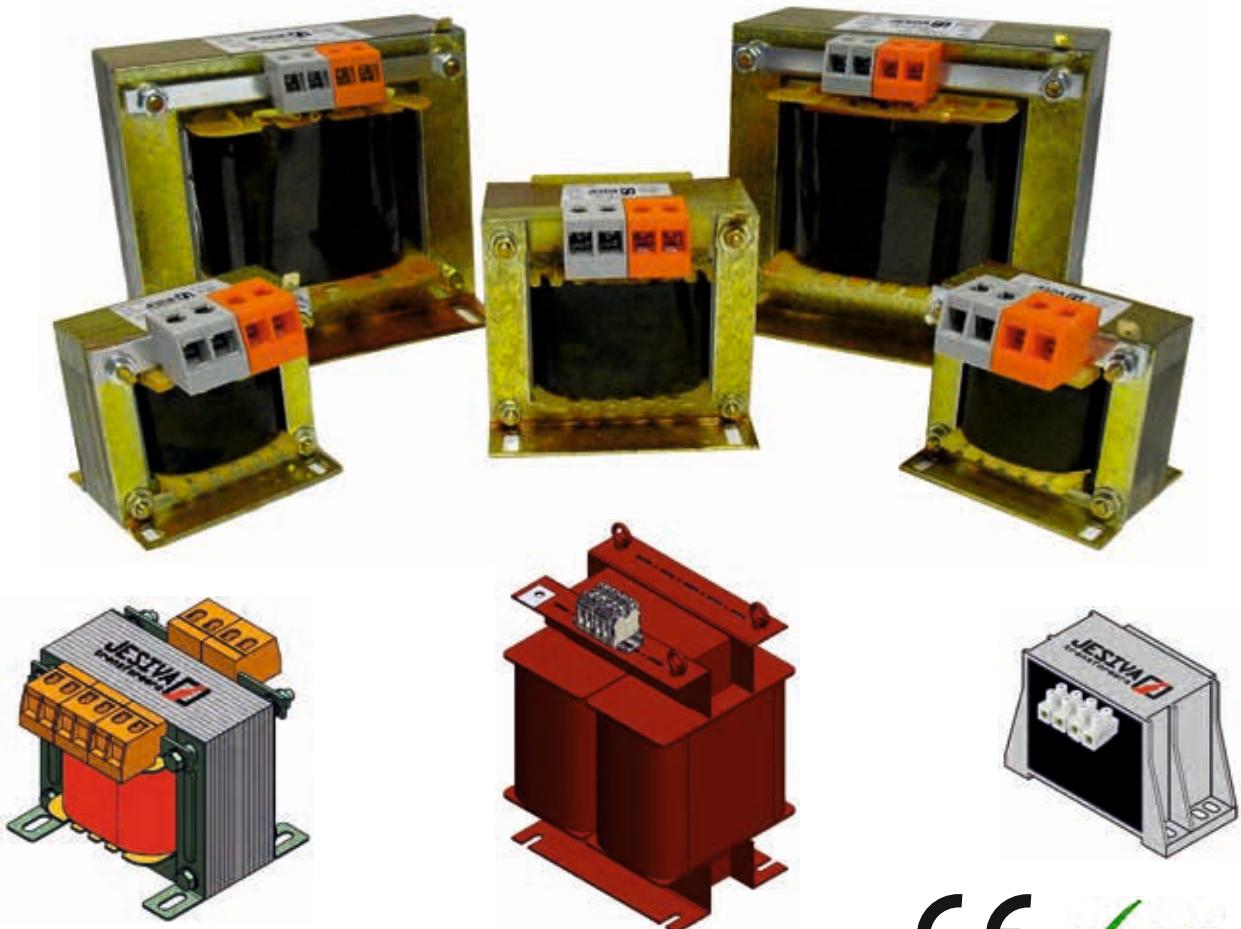
Any other custom requirement about power, voltage, ambient temperature or dimension is also available under request.

### Insulation Transformers

- Rated power between 40VA to 5000VA
- Open frame (IP00), or enclosed in metal box (IP23)
- Terminal blocks for safe and easy connection
- Horizontal or vertical mounting
- Single or multiple input voltajes
- Single or multiple output voltajes
- Insulation Class B, F, or H depending on power
- 4kV unitary insulation test between windings.
- Custom designs under request.

### Autotransformers

- Rated power between 100VA to 10000VA
- Open frame (IP00), or enclosed in metal box (IP23)
- Horizontal or vertical mounting
- Single or multiple input voltajes
- Single or multiple output voltajes
- Insulation Class B, F, or H depending on power
- 3kV unitary insulation test between winding and chasis.
- Custom designs under request.





Three-phase transformers are suitable for any industrial application where a voltage variation between the load and the net is required. These transformers are protected against rust and humidity by an epoxy varnish impregnation, which ensures a perfect behaviour during many years under any condition.

We can also design and manufacture any kind of three-phase autotransformer when it isn't necessary to have galvanic separation between primary and secondary windings.

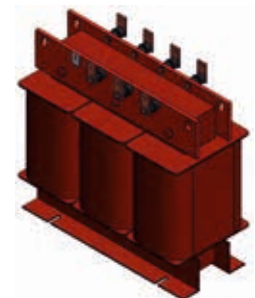
Any other custom requirement about power, voltage, ambient temperature or dimension is also available under request.

### Insulation Transformers

- Rated power between 500VA to 100kVA
- Open frame IP00, or enclosed in metal box with IP23 or IP54
- Terminal blocks for safe and easy connection
- Single or multiple input voltajes
- Single or multiple output voltajes
- Insulation Class B, F, or H depending on power
- 4kV unitary insulation test between windings.
- Custom designs under request.

### Autotransformers

- Rated power between 500VA to 200kVA
- Open frame IP00, or enclosed in metal box with IP23 or IP54
- Single or multiple input voltajes
- Single or multiple output voltajes
- Insulation Class B, F, or H depending on power
- 3kV unitary insulation test between winding and chasis.
- Custom designs under request.



- Unitary insulation test at **5KV**
- Epoxy resin casting
- Excellent thermal behaviour
- Specially designed for PCB mount
- Minimum **Class B** (130°C) materials
- Index Protection **IP00**
- RoHS** Compliant (2002/95/EC)
- Designed under **EN61558** Standards
- Double chamber bobbins used
- High resistance to temperature changes
- Other powers under request (\*)
- Other voltages under request (\*)
- Other pinout configuration under request
- Other fixation systems under request
- Internal resettable thermal protection under request

Fig.1

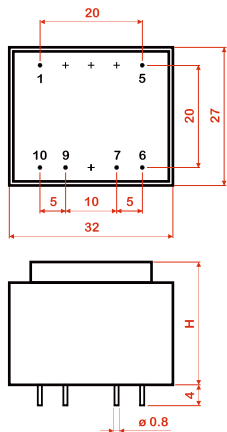


Fig.2

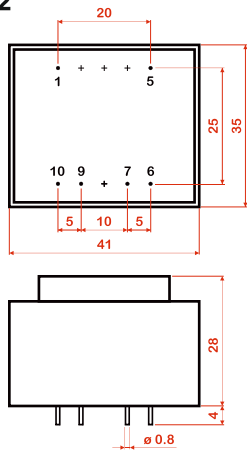


Fig.3

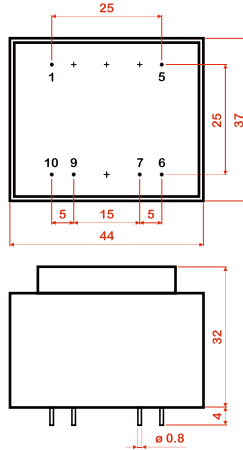


Fig.4

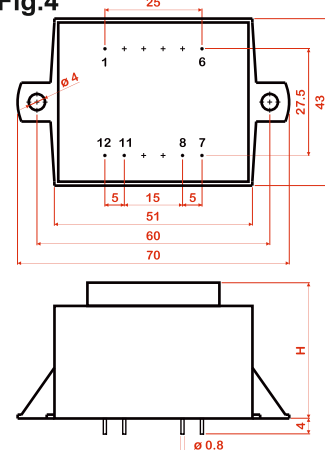


Fig.5

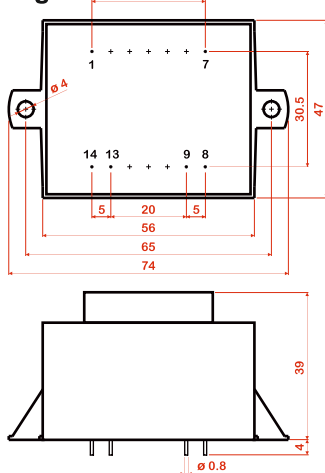


Fig.6

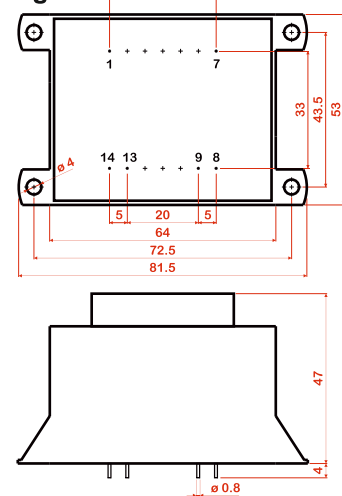


Fig.7

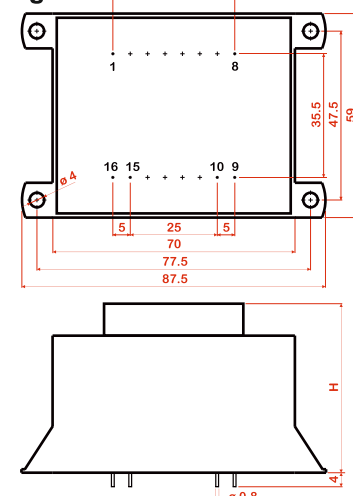
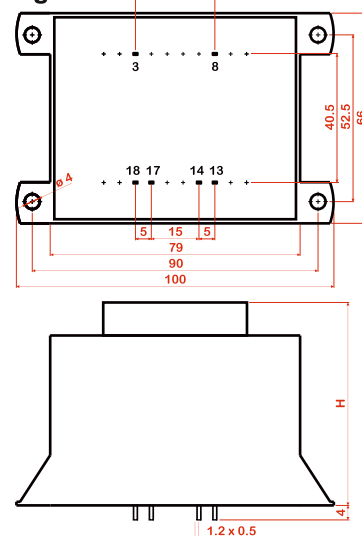


Fig.8



JESIVA Part n°	Output POWER*	Temp.	Primary*	Secondary*		Wheight (gr)	Size H (mm)	Drawing
				Single	Double			
E3005.05.X.XX	0.5VA	70°C/B	230V	6V .... 24V	2x6V .... 2x24V	45	17	Fig.1
E3010.15.X.XX	1.5VA	70°C/B	230V	6V .... 24V	2x6V .... 2x24V	75	22	Fig.1
E3010.18.X.XX	1.8VA	40°C/B	230V	6V .... 24V	2x6V .... 2x24V	75	22	Fig.1
E3012.18.X.XX	1.8VA	70°C/B	230V	6V .... 24V	2x6V .... 2x24V	85	24	Fig.1
E3012.20.X.XX	2.0VA	40°C/B	230V	6V .... 24V	2x6V .... 2x24V	85	24	Fig.1
E3015.20.X.XX	2.0VA	70°C/B	230V	6V .... 24V	2x6V .... 2x24V	100	27	Fig.1
E3015.25.X.XX	2.5VA	40°C/B	230V	6V .... 24V	2x6V .... 2x24V	100	27	Fig.1
E3018.23.X.XX	2.3VA	70°C/B	230V	6V .... 24V	2x6V .... 2x24V	115	29.5	Fig.1
E3018.28.X.XX	2.8VA	40°C/B	230V	6V .... 24V	2x6V .... 2x24V	115	29.5	Fig.1
E3023.28.X.XX	2.8VA	70°C/B	230V	6V .... 24V	2x6V .... 2x24V	140	34	Fig.1
E3023.32.X.XX	3.2VA	40°C/B	230V	6V .... 24V	2x6V .... 2x24V	140	34	Fig.1
E3814.35.X.XX	3.5VA	70°C/B	230V	6V .... 24V	2x6V .... 2x24V	160	-	Fig.2
E3814.40.X.XX	4VA	40°C/B	230V	6V .... 24V	2x6V .... 2x24V	160	-	Fig.2
E4214.50.X.XX	5VA	70°C/B	230V	6V .... 24V	2x6V .... 2x24V	200	-	Fig.3
E4214.60.X.XX	6VA	40°C/B	230V	6V .... 24V	2x6V .... 2x24V	200	-	Fig.3
E4816.08.X.XX	8VA	70°C/B	230V	6V .... 24V	2x6V .... 2x24V	300	35	Fig.4
E4816.10.X.XX	10VA	50°C/B	230V	6V .... 24V	2x6V .... 2x24V	300	35	Fig.4
E4820.10.X.XX	10VA	70°C/B	230V	6V .... 24V	2x6V .... 2x24V	350	40	Fig.4
E4820.12.X.XX	12VA	40°C/B	230V	6V .... 24V	2x6V .... 2x24V	350	40	Fig.4
E5419.12.X.XX	12VA	70°C/B	230V	6V .... 24V	2x6V .... 2x24V	430	-	Fig.5
E5419.16.X.XX	16VA	40°C/B	230V	6V .... 24V	2x6V .... 2x24V	430	-	Fig.5
E6021.20.X.XX	20VA	70°C/B	230V	6V .... 24V	2x6V .... 2x24V	600	-	Fig.6
E6021.25.X.XX	25VA	40°C/B	230V	6V .... 24V	2x6V .... 2x24V	600	-	Fig.6
E6623.30.X.XX	30VA	40°C/B	230V	6V .... 24V	2x6V .... 2x24V	800	49	Fig.7
E6630.35.X.XX	35VA	40°C/B	230V	6V .... 24V	2x6V .... 2x24V	900	56	Fig.7
E6635.45.X.XX	45VA	40°C/B	230V	6V .... 24V	2x6V .... 2x24V	1100	61	Fig.7
E7532.60.X.XX	60VA	40°C/B	230V	6V .... 24V	2x6V .... 2x24V	1350	64	Fig.8

### JESIVA Part n° designation

**E9999.99.X.XX**

Secondary Voltage  
from **06** (6V) to **24** (24V)

N° of Secondary windings  
**1** for single secondary  
**2** for double secondary

Format & output Power code

### Examples

**E3010.15.1.24** : EI30/10.5 1.5VA 230V/24V  
**E3814.35.2.09** : EI38/14 3.5VA 230V/2x9V  
**E4820.12.1.12** : EI48/20 12VA 230V/12V  
**E6623.30.2.18** : EI66/23 30VA 230V/2x18V



# PCB Low Profile Transformers (UI Range)

## JESIVA Part n° designation

### U9999.99.2.XX

Secondary Voltage  
from **06** (6V) to **24** (24V)

N° of Secondary windings  
**2** for double secondary

Format & output Power code

### Examples

**U3005.03.2.24** : UI30/5.5 3VA 2x115V/2x24V

**U3908.10.2.15** : UI39/8 10VA 2x115V/2x15V

**U3921.30.2.06** : UI39/21 30VA 2x115V/2x6V

JESIVA Part n°	Output POWER*	Temp.	Primary*	Secondary*	Wheight (gr)	Size H (mm)	Drawing
U3005.03.2.XX	3VA	70°C/B	2x115V	2x6V .... 2x24V	135	17	Fig.9
U3007.04.2.XX	4VA	70°C/B	2x115V	2x6V .... 2x24V	150	19	Fig.9
U3010.06.2.XX	6VA	70°C/B	2x115V	2x6V .... 2x24V	195	22	Fig.9
U3016.10.2.XX	10VA	70°C/B	2x115V	2x6V .... 2x24V	260	28	Fig.9
U3908.10.2.XX	10VA	50°C/B	2x115V	2x6V .... 2x24V	290	22	Fig.10
U3910.14.2.XX	14VA	50°C/B	2x115V	2x6V .... 2x24V	350	24	Fig.10
U3913.18.2.XX	18VA	50°C/B	2x115V	2x6V .... 2x24V	410	28	Fig.10
U3917.24.2.XX	24VA	50°C/B	2x115V	2x6V .... 2x24V	480	31	Fig.10
U3921.30.2.XX	30VA	50°C/B	2x115V	2x6V .... 2x24V	560	35	Fig.10
U4817.40.2.XX	40VA	50°C/B	2x115V	2x6V .... 2x24V	800	38	Fig.11
U4826.60.2.XX	60VA	50°C/B	2x115V	2x6V .... 2x24V	1100	47	Fig.11

- Same features than "EI Range"
- Double primary to allow **115V or 230V** connection
- Double secondary for serial or parallel connection
- Specially designed for low height applications
- Other pinout configuration under request



Fig.9

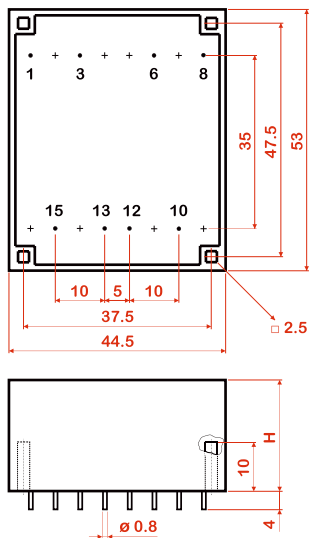


Fig.10

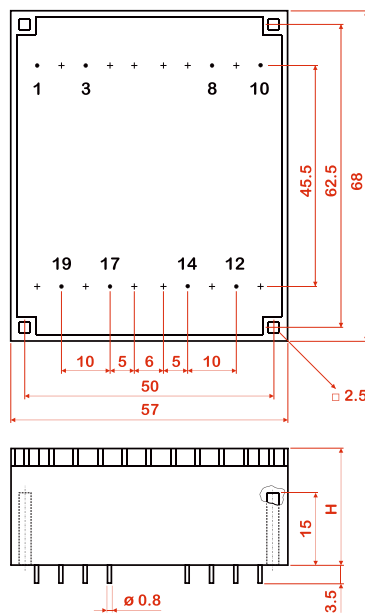
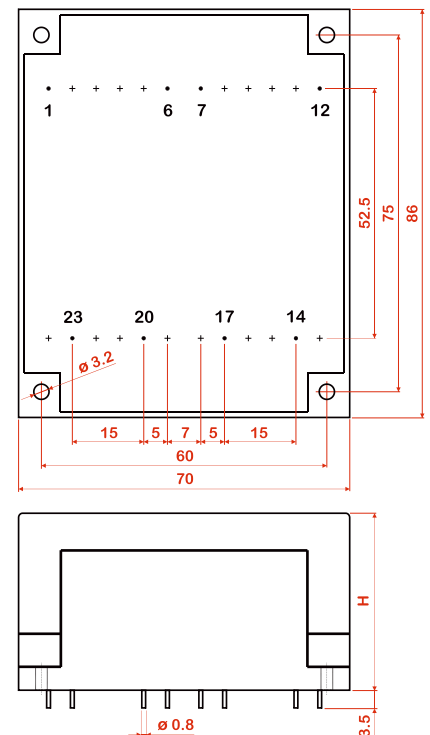


Fig.11



- More other encapsulated formats are also available in order to offer a wide range of solutions.
- Pins, Fastons, or Cable connection system.
- Customized designs.
- No minimum quantities required.

## Other encapsulated transformers formats





Essentially used for "Switching Mode Power Supplies" and other applications, high frequency components are being step by step a more important part of our production, and this is the reason why we are doing a great effort to improve every day our production processes, always searching for our **customer satisfaction** for prototypes and little quantities, or for big batches of mass production.

Our fast response and deliveries are the key of our success; even for custom products !

### Common Mode Chokes

- Used for supression of conductive EMI emissions.
- Open frame, base, or encapsulated design.
- Horizontal or vertical mounting.
- High inductance value in a very compact size.
- 4KV unitary insulation test.
- Custom designs under request.

### Toroidal Line Chokes

- Used for EMI filters, output choques, and DC-DC application.
- Open frame, base, or encapsulated design.
- Horizontal or vertical mounting.
- Iron powder cores with low losses.
- Low radiation design.
- Custom designs under request.

### High Frequency Transformers

- Used for Switching Mode Power Supplies (SMPS).
- EE, EF, EFD, ETD, UU, RM, PQ and other formats.
- Compact designs.
- Horizontal or vertical mounting.
- Class B (130°C) minimum materials.
- Custom designs under request.

### Radial Lead RF Chokes

- Usually used for output chokes.
- Ferrite core for high frequency applications.
- Up to 10A current value.
- Fixed or flexible lead spacing.
- Custom designs under request.





JESIVA offers a very wide range of standard toroidal transformers, which satisfies any power requirement from 15VA to 5000VA, also offering single or multiple windings with a very flexible voltage outputs available, and always designed and manufactured according to the European Safety Standard EN61558.

Toroidal transformers are manufactured with a low-loss ring core without gaps, and a high thermal range of enamelled copper wire. It offers the possibility to manufacture a more compact and a more efficient transformer in comparison with conventional laminated transformers.

This kind of transformers is particularly recommended on power supplies where reduced dimensions are needed (specially with low height requirement), and where low losses and low magnetic dispersion level are required.

## TT Range Toroidal Transformers

- Transformers & Autotransformers range.
- Available powers from 15VA to 5000VA.
- High efficient design with very low losses.
- Mounting hardware included.
- The best "price/performance" ratio.
- Minimum magnetizing current.
- Dispersion of the magnetic field negligible.
- Flexible "Height/Diameter" design.
- No metal parts accesible.



## TTE Range Encapsulated Toroidal Transformers (Class II)

- Transformers & Autotransformers range available.
- Available powers from 15VA to 1000VA.
- Encapsulated/Sealed with epoxy resin.
- Excellent protection against moisture and saline environments.
- Minimum magnetizing current
- Dispersion of the magnetic field negligible.
- No metal parts accesible.
- Extremelly easy mounting system.
- Better heat dissipation.



## Available options under request

- Three Phase Transformers and Autotransformers also available on toroidal design.
- Rigid or flexible wire leads.
- Connectors and/or terminals at the ends of the output wire leads .
- Increased length of the output cables till 5m.
- Central hole in resin for easy assembly.
- Electrostatic screen grounding between primary and secondary.
- Internal thermal protection automatically resettable.
- Rings for easy lifting (recommended for heavy transformers over 20Kg).



Single phase and Three phase inductors/chokes/reactors solutions to minimize mains pollution generated from power electronics devices, and improving the power factor (PF) and materials lifetime too.

Any custom requirement about power, voltage, ambient temperature or dimension is also available under request with no minimum quantity required.

### DC Chokes

Used for smoothing the intermediate circuit current in power converters, reducing the reactive-power components, increasing the "phi-cosine", and improving efficiency.

### dV/dt Inductors

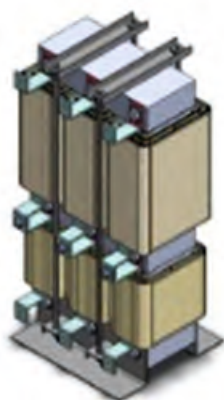
Used to reduce the peak voltages on motors connected to any variable speed drives. It will increase motors lifetime avoiding further deterioration of motor insulation, and lower leakage currents.

### Line Reactors

Line reactors are used in order to minimize mains pollution, reducing the reactive-power components and charging currents in the DC link capacitor, and also improving the "phi-cosine".

### Sinus filters

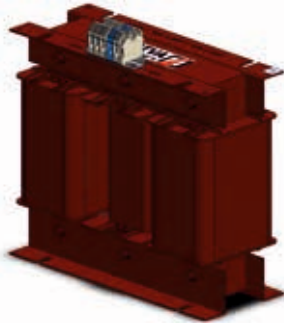
Also called "Harmonic filter", it's a filter that reduces drastically those annoying high frequency voltage pulses, and ensure a very sinusoidal currents, increasing system service lifetime and its reliability too.



Here you can find some other kind of transformers and inductive products that we are also manufacturing in order to achieve the most complete range of products.

### Three phase to single phase

- Insulation transformers to convert three phase net 400V to single phase net 230V.
- Minimizing load current distribution by phase.
- Power available from 0.5kVA to 30kVA.
- IP00, IP21, and IP54 enclosure available.



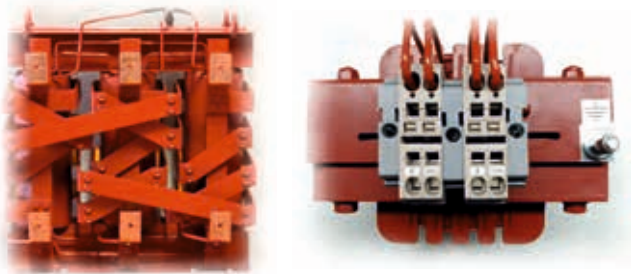
### DIN Rail Transformers

- Transformers & Autotransformers range.
- Inside a case or encapsulated design.
- Wide range of powers and voltages.
- Custom designs under request.



### Special applications

- Ask our engineers for any project you got
- Available powers from 0.5VA to 200kVA.
- Multiple connection systems (Terminal blocks, pins, cable leads .....



### TEC Range Transformers

- Encapsulated with epoxy resin.
- Available powers from 3VA to 65VA.
- Fixation ears for an easy mounting.
- Custom designs under request.



### Custom design Transformers and Inductors

- No minimum quantities required.
- Very fast lead time.
- Multiple connection systems.
- PCB or conventional mounting systems.
- Encapsulated, toroidal, or open frame formats.
- Feel free to contact us for any design you need.





JESIVA's factory & headquarters:

Transformadores JESIVA, S.L.  
C/ Godelleta, 1 (Apdo. 80)  
46191 - Vilamarxant  
VALENCIA (Spain)

Phone: +34 96 271 09 62  
FAX: +34 96 165 01 31  
email: [jesiva@jesiva.com](mailto:jesiva@jesiva.com)



[www.jesiva.com](http://www.jesiva.com)

You can find more information in your country about  
JESIVA's products contacting with your dealer:

**JESIVA**   
transformers